

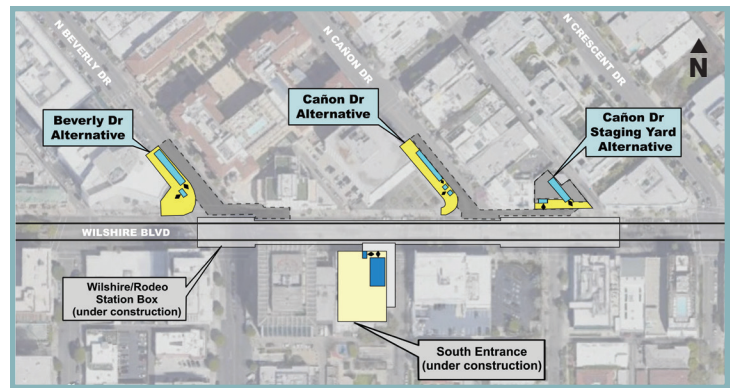
PROJECT INFORMATION



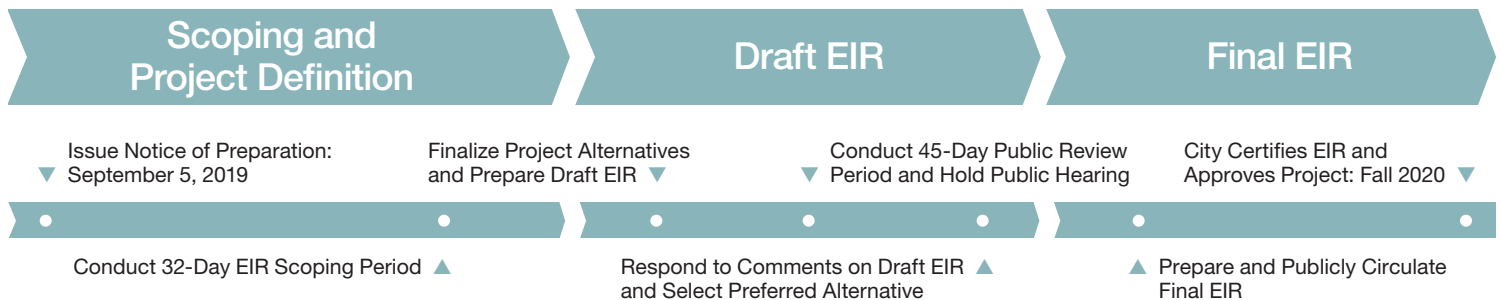
Westside Purple Line Rodeo Station North Portal

PROJECT OVERVIEW

- The City of Beverly Hills is preparing a Draft Environmental Impact Report (EIR) under the California Environmental Quality Act (CEQA) for the proposed Westside Purple Line Wilshire/Rodeo Station North Portal Project (proposed project).
- Each Alternative would include a street level entrance/exit using a stairway, escalator, and elevator, in addition to an underground walkway to connect to the Wilshire/Rodeo station.
- The proposed project would provide a second entrance/exit for the Wilshire/Rodeo station on the north side of Wilshire Boulevard to serve the Business Triangle.
- Three potential station entrance/exit alternatives are being considered:
 - › Beverly Drive Alternative
 - › Cañon Drive Alternative
 - › Cañon Drive Staging Yard Alternative



ENVIRONMENTAL IMPACT PROCESS OVERVIEW



32-DAY EIR SCOPING PERIOD: SEPTEMBER 5–OCTOBER 7, 2019

How to Provide Input on the EIR Process

- The City invites all interested members of the public to provide written comments on issues related to potential environmental impacts, project need, and project purpose during a 32-day scoping comment period, beginning on Thursday, September 5, 2019, to Monday, October 7, 2019.
- Using the information obtained through the scoping period, the City will prepare an EIR to analyze the potential environmental impacts of the proposed project alternatives.
- Written comments and project-related questions should be addressed to:
 - ✉ Jessie Holzer, Transportation Planner
City of Beverly Hills Community Development Department
455 North Rexford Drive, Beverly Hills, California, 90210
northportal@beverlyhills.org ☎ 310-285-1128
 - 🌐 www.beverlyhills.org/environmental
 - 🌐 www.beverlyhills.org/northportal