



ENVIRONMENTAL COMPLIANCE AND SUSTAINABILITY PROGRAMS BUREAU

April 17, 2017

Public Works Commission

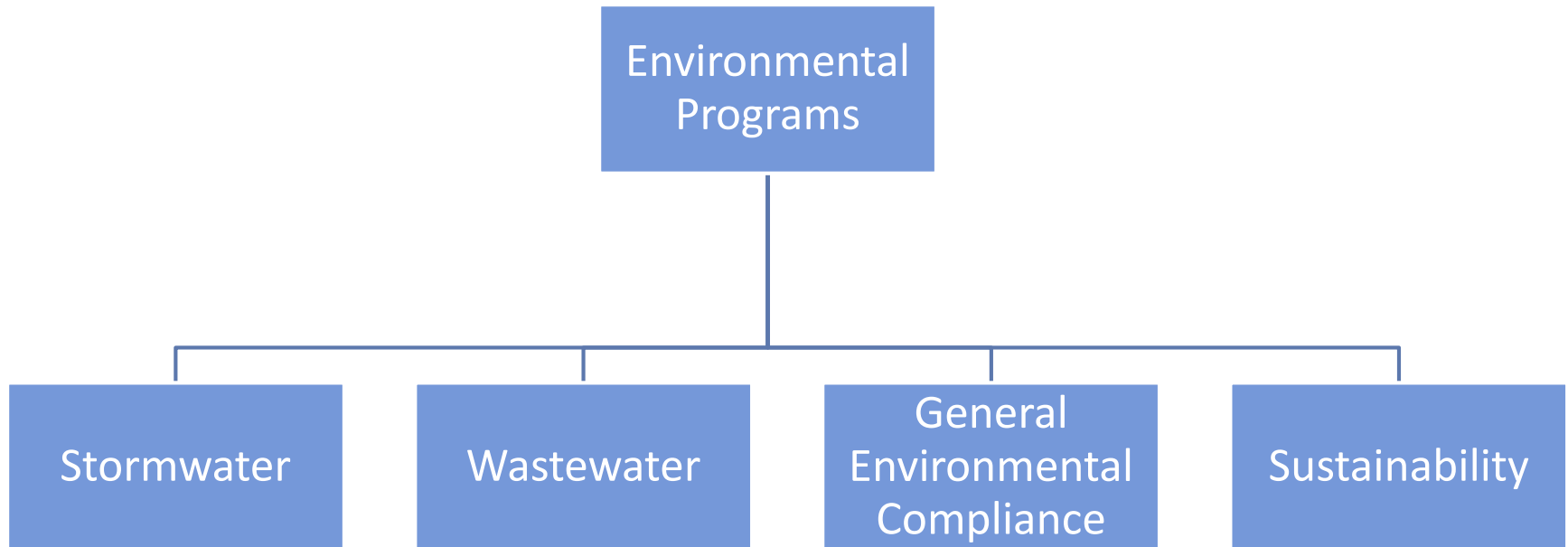


Overview

- Background and the Environmental Programs
- Programs Updates & Projects
- Discussion & Questions

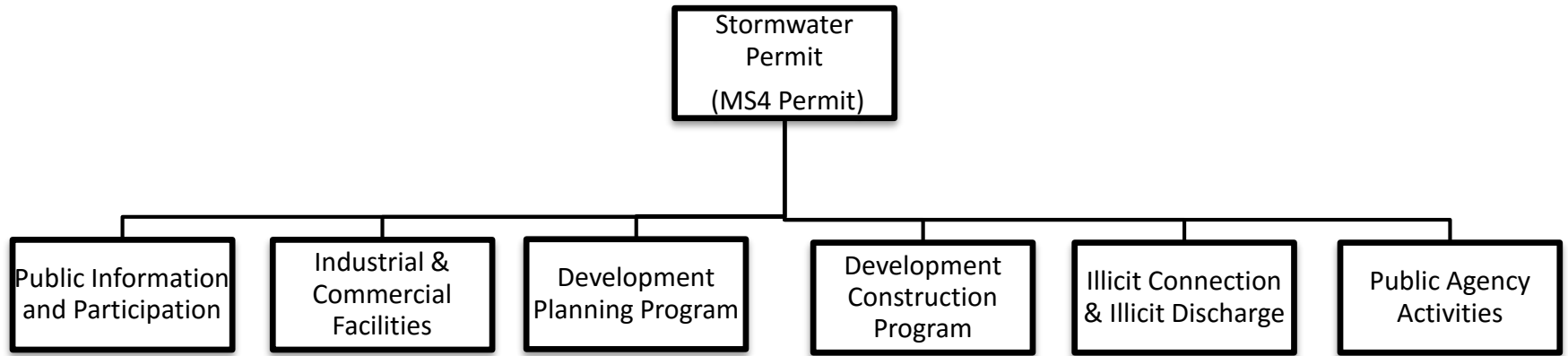


Environmental Programs





Stormwater Programs





Stormwater Programs

- Public Information and Participation Program
 - Education & Outreach
- Industrial/Commercial Facilities Control Program
 - Inspection and Compliance
- Development Planning Program
 - Erosion & Sediment Control Plan (ESCP)
 - Low Impact Development (LID)



Stormwater Programs

- Development Construction Program
 - Construction Site Inspection & Enforcement
 - Routine inspection and before storm event
- Illicit Connection & Illicit Discharge
 - Storm drain system inspections
 - Enforcement



Stormwater Programs

- Public Agency Activities
 - Reduction and response to Sanitary Sewer Overflows (SSO's)
 - BMP Implementation on:
 - CIP Projects
 - Vehicle Maintenance/Material Storage Facilities/Yard Management
 - Landscape and Recreational Facilities Management
 - Proper Storm Drain Operation and Maintenance
 - Watershed Planning



Stormwater Program

- Watershed Planning
 - Ballona Creek TMDLs
 - Monitoring
 - Implementation
 - Ballona Creek Watershed Management Group (BC-WMG)



Wastewater Program

Statewide
WDR

Sanitary Sewer Systems

Sanitary Sewer System
Management Plan
(SSMP)

Operation Analysis

Regulatory Reporting to
State and County Health



General Environmental & Sustainability

- Hazardous Waste Disposal
- Water System Stormwater Permit
- Sustainability Plan
 - Review and Update



Stormwater Programs Update & Projects

- 2012 MS4 Permit
 - Implement the programs set in the 2001 Permit &
 - Implement the Ballona Creek TMDLs
- Industrial/Commercial Facilities Program
 - FY15-16: 116 Commercial Facilities
 - FY16-17: Scheduled to inspect 172 Commercial Facilities
- Public Agencies Activities Program
 - Installation of full capture screens in 697 catch basins



Stormwater Programs Update & Projects

- Development Planning and Construction Program
 - Erosion and Sediment Control Plan (ESCP)
 - Adopting the Low Impact Development (LID) requirement
 - Adopting the Green Streets Policy
 - Eleven (11) swales in the Santa Monica Blvd. Reconstruction Project



Stormwater Programs Update & Projects

- Ballona Creek TMDLs
 - Compliance deadline of 2021
 - Joined Ballona Creek Watershed Management Group (BCWMSG)
- Compliance Pathway –
 - Ballona Creek Enhanced Watershed Management Program (BC- EWMP) Plan
 - Coordinated Integrated Monitoring Plan (CIMP)



Stormwater Programs Update & Projects

- BC-EWMP Plan
 - “Recipe” to meet water quality standards
 - Policies
 - Regional Projects (Large Scale BMP)
 - Distributed Projects (green streets)
- Watershed Goal:
 - Capture 2,081 acre-ft. (678M gallons) from a designed storm
 - Estimated Implementation Cost \$2.7B



Stormwater Programs Update & Projects

- Beverly Hills EWMP Goals:
 - Capture and Infiltrate 87 acre-ft. of runoff.
 - 39 acre-ft. green streets
 - 37 acre-ft. regional projects
 - 11 acre-ft. LID on development projects
- La Cienega Park and Frank Fenton Field-Priority Project
 - Potential to capture 24 acre-ft. of water
 - Estimated cost \$32.2 M
 - Feasibility Study



Stormwater Programs Update & Projects

- Looking for Stormwater Opportunity Projects
 - Beverly Hills High School Regional Project
 - Burton Way Green Streets Project
 - Feasibility Complete
 - Evaluation was accelerated to see if the project can address both the aesthetics and green streets needs quickly.
 - Stormwater Compliance Master Plan
 - Assess and refine the EWMP compliance approach
 - Link stormwater opportunities with CIP
 - Long term financial planning



Stormwater Programs Update & Projects

- Pending legal cases that challenges the EWMP/WMP
 - Unfunded Mandate issue
 - Filed test claim to the Commission of State Mandates
 - No scheduled hearing
- Balance approach that to show progress and adapt based on final court findings.



Stormwater Programs Update & Projects

- NPDES Drinking Water System Discharge Permit in 2014
 - Evaluated for the Water Bureau
 - Enrolled to gain the benefits
 - BMP training
 - Record keeping training



Wastewater Programs Updates & Projects

- Review of the 2012 SSMP
- Identified potential sewer overflow locations
 - Adjusted maintenance schedule to reduce the SSOs.
- Enhancing CCTV inspection program
- SSO Response Plan
- Update the 2012 SSMP – completed by December 2017



Conclusion

- Bureau handles a wide variety of environmental regulations
- Collaborative cooperation to effectively remain compliant
- Monitor regulations
- Resources