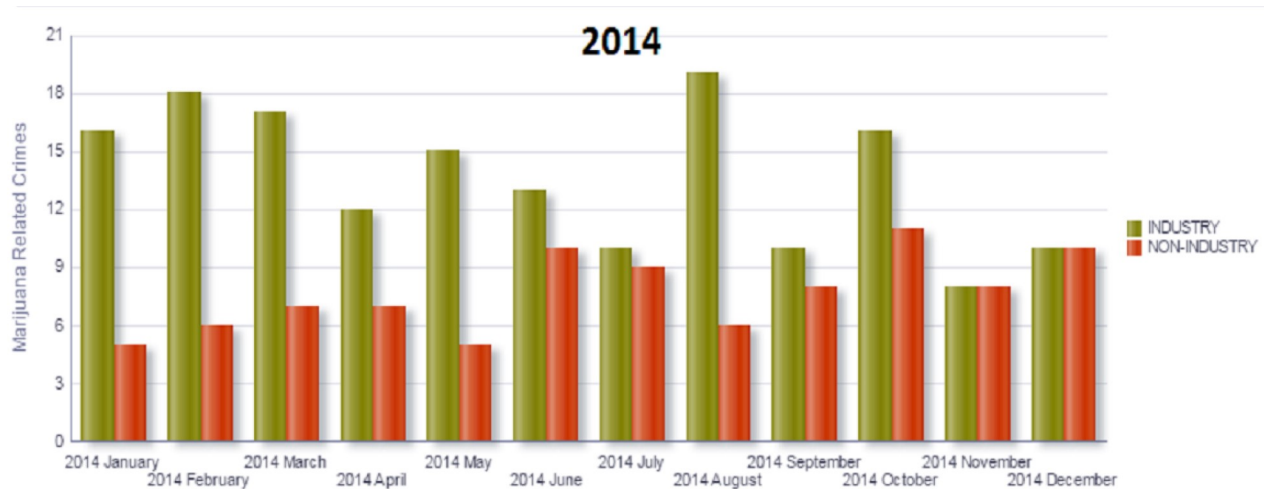


## Marijuana-Related Crime

This graph represents the total number of crimes that were reported in the City and County of Denver where marijuana product was the primary target of the crime. Industry crimes are crimes committed against or by a licensed marijuana establishment. Non-industry crimes are crimes where marijuana was the primary target in the commission of the crime, but the marijuana has no apparent tie to a licensed business.



### Total Marijuana-Related Crime (and percentage of overall crime)

- 2012: 256 (0.58%)
- 2013: 257 (0.53%)
- 2014: 293 (0.48%)
- 2015: 270 (0.42%)

This graph was last updated on 06/23/16. A CSV export of the data represented in this graph can be found [here](#).

Contact us: For questions regarding any of this graph or its data, please contact [MarijuanaInfo@denvergov.org](mailto:MarijuanaInfo@denvergov.org)

