

Maison de Luxe

DESIGNER SHOW HOUSE
AT DOHENY GREYSTONE ESTATE
IN BEVERLY HILLS

PRESENTED BY *LUXE INTERIORS + DESIGN*,
THE CITY OF BEVERLY HILLS AND THE FRIENDS OF GREYSTONE

NOVEMBER 2015



TABLE *oF* CONTENTS

MAYOR OF BEVERLY HILLS' LETTER	5
LETTER FROM THE FRIENDS OF GREYSTONE	7
LETTER FROM THE EDITOR-IN-CHIEF	9
SOCIAL COMMITTEE	12
WELCOME TO MAISON DE LUXE	15
AVO	16
NATASHA BARADARAN	17
ANDREW BROWN	19
KRISTEN BUCKINGHAM	21
NINA CAMPBELL	23
CONSORT DESIGN	24
TIMOTHY CORRIGAN	26-29
PATRICK DRAGONETTE	31
CLIFF FONG / MATT BLACKE, INC.	33
OLIVER M. FURTH	34
JANE HALLWORTH	35
LAUREN LIESS	36
MASSUCCO WARNER MILLER	37
AMY MEIER	38
BRIAN PAQUETTE	41
PLATNER & CO.	43
REATH DESIGN	45
REDMOND ALDRICH DESIGN	46
ANDREA SCHUMACHER	47
MARK D. SIKES	48
SARA STORY	50
BENJAMIN VANDIVER	53
BETH WEBB	54-55
ADDITIONAL ROOMS–SOURCES	57
DESIGN LECTURE SERIES	59
HISTORY OF GREYSTONE	60-61
F.O.G. RESTORATION AT GREYSTONE	64-65
MAISON DE LUXE PARTICIPATING SPONSORS	66-67
LETTER FROM THE V.P./GROUP PUBLISHER	68
CITY OF BEVERLY HILLS SALUTES	71

NEW INTRODUCTIONS
FROM BARBARA BARRY.



Refined forms. Natural elegance. A sense of balance and harmony.

PACIFIC DESIGN CENTER: 8687 Melrose Ave., Ste B-525 - T (310) 652-7252
BAKER LOS ANGELES: 360 N. La Cienega Blvd. - T (310) 289-0074

Baker



CITY OF BEVERLY HILLS

455 NORTH REXFORD DRIVE • BEVERLY HILLS, CALIFORNIA 90210

Julian A. Gold M.D., Mayor

Dear Guest:

The City of Beverly Hills and the Beverly Hills City Council welcome you to Doheny Greystone Estate and the 2015 Maison de Luxe Designer Show House.

We are excited to have Luxe Interiors + Design return as our title sponsor and thank them for their creative selection of 25 renowned interior designers, who will be showcased throughout the 12-day event.

I want to thank all of the sponsors for their generosity and passion. The success of this event is due in part to their ongoing dedication and support.

Nine Designer Show Houses have taken place over the years at Greystone, exposing the beauty and historic architecture of the estate to thousands of people. This event, along with many others, has spurred greater interest in the mansion and gardens.

Greystone continues to be an important part of the City of Beverly Hills cultural landscape. In the past 10 years, the City has provided funding for many restoration and renovation projects, demonstrating the City's commitment to maintain and beautify the property. These enhancements provide a more enjoyable visitor experience and make Greystone a viable and desirable option for private events.

The Friends of Greystone (FOG) organization, under the leadership of FOG President, Susan Rosen, has been an important partner with the City for the estate's preservation. This past September, FOG hosted a dedication ceremony designating the Doheny Greystone Estate as the City of Beverly Hills' Historic Landmark No. 4. Proceeds from this year's Show House, as well as many other FOG events, will help fund the mansion's ongoing restoration. And please make sure to visit the FOG gift shop for the upcoming holiday season.

Thank you for attending the Maison de Luxe Designer Show House at historic Doheny Greystone Estate. We know you will enjoy your visit and look forward to seeing you at future events.

Best wishes,

Julian A. Gold, M.D.
Mayor, City of Beverly Hills

Luxe Interiors + Design

is proud to present

Maison de Luxe

luxe.
interiors + design®



Luxe Interiors + Design is where design enthusiasts, architects and designers connect. Through its 14 editions, the magazine inspires and directs readers to the best national and local resources that enhance a well-lived life.

www.luxesource.com



501 Doheny Road
Beverly Hills, CA 90210
P.O. Box 16938
Beverly Hills, CA 90209-2938
TEL: 310.286.0119
friends@greystonemansion.org
www.greystonemansion.org
IRC Sec. 501 (c) (3)
Tax Exempt Organization



November 5, 2015

OFFICERS

SUSAN ROSEN
President
VICKY SWARTZ
1st Vice President/Treasurer
ROBERTA HAFT
2nd Vice President
GAY LYN PARRISH
Corporate & Historical Secretary
ANITA ZWIRN NAIMAN
Recording Secretary

ACTIVE BOARD MEMBERS

LAUREN COHEN
DR. ASHLEY CURIEL
CAROLYNNE DYNER
ADRIENNE FORST
SUZANNE FURST
CHRISTINA JHONG
JERRY LINKIN
KATHY MELAMED
ARLINE PEPP
KIM WHITE PETERSON
SUSAN G. RIFKIN
DIANA RIGGS
KATHI ROTHNE
Archivist
MARSHA TAUBER SALLAI
JOY SCHNEIDER
ARNOLD SEIDEL
Chair Emeritus
VICTORIA SHILTON
ALLEN STEINER
LES TRAUB
SANDY ZWIRN

JULIAN SAADEH
Teen Advisory

HONORARY COMMITTEE

JEANNE ANDERSON
ALAN BUNNAGE
ANITA DOHENY
MARJORIE FASMAN
FRED HAYMAN
JEFFREY HYLAND
JAMES W. JAHANT
DOROTHY KAMINS
NANCY KRASNE
JANET SALTER

HISTORIC PRESERVATION SUPPORTERS

MELVYN GREEN, S.A.
PEYTON HALL, FAIA
CHRISTY McAVOY, FAIA
KATHERINE TIMM
Historian Emeritus

Dear Maison de Luxe Guest,

Magnificent homes come and go, they are built, but sadly, more times than not, they are torn down. The Doheny Greystone Mansion, magnificent beyond words, fortunately was saved from being torn down and is here today with open doors welcoming you to this amazing Maison de Luxe Design Show House.

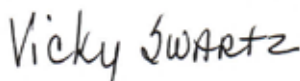
From the moment you walk through the front doors of the historic Doheny Greystone Mansion you are taken back to a period of time known as the gilded age of architecture. As you stroll through the stately halls and beautiful rooms you will see how twenty-three interior designers have shared their talents and gifts by transforming the Mansion into breathtaking yet comfortable living spaces. These interior designers donated their time to share with you their magic, their talents and their love of their profession, and in their doing so they have brought life back to the magnificent Doheny Greystone Mansion.

Doheny Greystone Estate is listed on the National Registry of Historic Places and is designated Historic Landmark #4 of the City of Beverly Hills. This magnificent Estate is forever protected yet there is so much needed restoration work to be done in order to bring it back to its original state of glory. The Friends of Greystone, comprised solely of volunteers, work tirelessly to raise funds for much needed restoration projects. Please join the Friends of Greystone, become a member and a part of history and help ensure that Doheny Greystone Estate is fully restored, preserved and appreciated by future generations to come. Visit our website and join our mailing list and become connected to the many events that take place throughout the year here at Doheny Greystone Estate.

On behalf of the entire Friends of Greystone Board of Directors thank you for attending the Maison de Luxe Design Show House and thank you for supporting the Doheny Greystone Estate. We are confident that your time spent here today will be a memorable one.

Sincerely,


Susan Rosen
PRESIDENT


Vicky Swartz
VICE PRESIDENT



MODEL S

ZERO EMISSIONS. ZERO COMPROMISES.

5+2

AVAILABLE SEATING

0

EMISSIONS

2.8

SEC. 0-60 MPH

275

MILES PER CHARGE

Introducing a car so advanced it sets a new standard for premium performance.

LEARN MORE AT TESLAMOTORS.COM



PAMELA JACCARINO

V.P., EDITOR-IN-CHIEF
LUXE INTERIORS + DESIGN

Welcome to *Luxe Interiors + Design's* Maison de Luxe Designer Show House. We are delighted to join with the City of Beverly Hills and the Friends of Greystone to present this incredible show house at Doheny Greystone Estate, a beloved Beverly Hills architectural icon and national treasure.

A hand-selected group of top designers from across the country were invited to reimagine the rooms of this landmark estate. I thank each one of them for bringing their creative vision to this design event.

I would also like to acknowledge our valued sponsors and the design industry professionals who lent their support. Grateful thanks as well to producer Vanessa Kogevinas; event designer and caterer, Lulu Powers; and the dedicated team whose efforts made Maison de Luxe possible.

A handwritten signature in dark ink, reading "P. Jaccarino". The signature is written in a cursive, flowing style.

Sotheby's

INTERNATIONAL REALTY



BEVERLY HILLS

Italian-Style Villa

web: 0308343 | **\$35,000,000**

Sunset Strip Brokerage

Marc Noah 310.968.9212

THE ART OF LIVING



BEVERLY HILLS | BeverlyHills90210Estate.com
web: 0027211 | **\$35,000,000**
Beverly Hills Brokerage
Drew Mandile, Brooke Knapp 310.749.7124



MALIBU | Carbon Beach Opportunity
web: 0423659 | **\$12,250,000**
Westlake Village Brokerage
Cathie Messina 818.335.8047



LOS FELIZ | 4120 Cromwell Avenue
web: 0308389 | **\$5,950,000**
Sunset Strip Brokerage
Aaron Montelongo 310.600.0288



PASADENA | Stunning Mid-Century Home
web: 0277662 | **\$2,750,000**
Pasadena Brokerage
Deborah Maxson 626.688.7857



WESTWOOD | Timeless Gated Traditional
web: 0308486 | **\$1,995,000**
Sunset Strip Brokerage
N. Rosen 310.993.2036, S. Alperin 310.888.3708



BRENTWOOD | Bernheim House, Ray Kappe
web: 0343796 | **\$1,995,000**
Pacific Palisades Brokerage
Enzo Ricciardelli 310.255.5467; co-listed

Visit onlywithus.com to discover the benefits available through us alone.

Beverly Hills | Cape Cod | Greenwich | Hamptons | Houston | Los Angeles | Malibu | Montecito
Monterey Peninsula | New York City | Pacific Palisades | Palm Beach | Pasadena | San Francisco Bay Area
Santa Barbara | Santa Fe | Santa Ynez | Sonoma - Napa Wine Country | Topanga | Ventura
sothebyshomes.com

Sotheby's International Realty and the Sotheby's International Realty logo are registered (or unregistered) service marks used with permission. Operated by Sotheby's International Realty, Inc.

SOCIAL COMMITTEE

MARTYN LAWRENCE BULLARD

ANITA DOHENY

DAWN AHRENS & DAVID GOODING

LORI & JEFFREY HYLAND

KATHRYN M. IRELAND

DOROTHY & PHILIP KAMINS

KACEY DOHENY MCCOY & PETER MCCOY

RAYLENE & BRUCE MEYER

SUSAN & MICHAEL NIVEN

SUZANNE & ADAM SANDOW

WINDSOR SMITH

ESTEE STANLEY



Marvel Silver-Gray from the Serendipity Wool & Silk Rug Collection

888.726.2393

SAMAD

www.samad.com

THE WORLD'S FINEST DECORATIVE RUGS

United States-East Rutherford, NJ Tel: 201 372 0909 • Great Britain-London, England Tel: 020 8800 4406

© All designs copyright Samad Brothers, Inc.



SOANE
BRITAIN

WE ARE DELIGHTED TO WELCOME YOU TO OUR SAN FRANCISCO STUDIO
PLEASE CONTACT HOLLY SHARPE AT THE SAN FRANCISCO DESIGN CENTER, 2 HENRY ADAMS STREET, SHOWPLACE M-17
TELEPHONE: +1 415 590 3260 HOLLY@SOANE.COM WWW.SOANE.COM



Welcome
TO THE 2015
MAISON DE LUXE
DESIGN SHOW HOUSE

Since 2002, Doheny Greystone Mansion in Beverly Hills has proudly showcased the talent and vision of some of our nation's leading interior designers, recapturing the high style of a bygone era while bringing stately interior spaces to life with distinctively modern flair.

This Fall, the Doheny Mansion glows radiantly once again as 23 renowned designers from across the country transform its historic rooms and spaces. Presented by *Luxe Interiors + Design* in association with the City of Beverly Hills and Friends of Greystone, the designers featured on the following pages share their talents and bring their creative visions to life throughout the legendary home. *Enjoy!*



AVO/BRIT KLEINMAN

BUTCHER'S KITCHEN (SECOND FLOOR)

A modern space inspired by its roots, the design of the butcher's kitchen imagines the Dohenys of today as sophisticated, innovative trendsetters who appreciate the delicate balance between style and comfort, luxury and utility, old and new. Hand-painted leather panels and soft hides offer an unexpected and opulent twist on traditional butcher shop tiles, adding warmth and life to this functional space which was once used for preparing game shot from the nearby balcony. Bold graphic patterns, clean lines and sumptuous textures complement original features like the carved wooden sink and vintage cabinets.

Brit Kleinman founded AVO in 2014 with a mission to inspire a new appreciation for materials and their innovative use in the home. Rooted at the intersection between art and design, Brit's flagship collection of hand-painted cowhide rugs plays with the juxtaposition between shape and pattern. Today AVO envisions distinctive interiors with products for the whole environment, including pillows, furnishings and wallcoverings.

ROOM SOURCES

**HAND-PAINTED LEATHER
TILES AND PILLOWS**
AVO / Brit Kleinman

**RANGE CABINETS AND
WALL BUILD OUT**
Funtime Cabinet Factory

SINK FIXTURE
ROHL

**RANGE AND HOOD
INSERT**
Dacor

COUNTERTOPS
Crossville

**DINING TABLE, BENCH,
STOOLS, ISLAND AND
CONSOLE TABLE**
UHURU Design

HANGING LIGHT FIXTURE
Brendan Ravenhill

**CERAMIC POTS,
CANDLES, DISH TOWELS,
WOOD HOOKS
AND TRAY**
Grain

**TABLE SETTINGS,
DISHWARE AND
CUTTING BOARD**
Heath Ceramics

**STAINLESS COOKWARE
SET, WOODEN TOOLS
AND SAUCEPAN**
Lenox Housewares

HARDWOOD FLOOR
Virtu Wood Flooring

PAINT
Farrow & Ball

FLOOR INSTALLATION
Wilson Hardwood Floors

**COUNTERTOP
INSTALLATION**
A & R Granite and Marble

**LEATHER TILE
INSTALLATION**
Jerryl Gorman Wallpaper
Hanging



NATASHA BARADARAN

PORTE COCHÈRE & SOUTH TERRACE (EXTERIOR)

The porte cochère is inspired by “Dolce Far Niente”—the sweetness of doing nothing and the sheer indulgence of enjoying the moment. Being raised between Los Angeles and Milan, Baradaran sites the Italian zest for life, the attitude, colors and timeless style as a constant source of inspiration for a life well lived. New works from Baradaran’s upcoming second furniture collection CURVA, are featured in metal and goatskin finishes, combined with comfortable textiles which create the perfect hybrid of SoCal and Italian design. A great space for an afternoon aperitivo!

As with the design of the porte cochère, the south terrace was designed in the spirit of “Dolce Far Niente”. However, in this space, Baradaran went with a more neutral palette, as the grounds provided so much of the color. The neutrality of the south terrace’s color palette allowed Baradaran to celebrate and take in the beauty of nature, gorgeous blue skies and evening sunsets for which Southern California is known.

Natasha Baradaran is the founder and creative visionary behind Natasha Baradaran Interior Design. Inspired by her multicultural background, Natasha’s work fuses European design traditions, Middle Eastern arts and the laid-back luxury of Los Angeles. Natasha has received industry accolades, including the 2012 Star on the Rise award from the Pacific Design Center, and in 2013 was included in The Hollywood Reporter’s list of the “25 Most Influential Interior Designers in Hollywood.” Her work has been featured in Architectural Digest, Elle Decor, House Beautiful, Veranda, W Magazine and Town & Country.

ROOM SOURCES

PORTE COCHÈRE

AREA RUG

Anthony Monaco

WALLCOVERING

Faux Panels covered with Arte International

UPHOLSTERY

Isadora Sofa by Natasha Baradaran Collection
Stove Lounge Chairs by Niermann Weeks

ROMA CHAIR OTTOMAN

Frontgate

OCCASIONAL

Piero Console - CURVA by Natasha Baradaran
Cole Stool by Made Goods
Focal Corso Table - CURVA by Natasha Baradaran
Pamela Holmes Concrete Stool by McGuire
Laura Kirar Bie Accent Table by Baker

CERAMIC GARDEN STOOL

Charles Jacobsen

FABRIC

Zoffany/Scion
Mark Alexander/
The Romo Group
Rogers & Goffigon Ltd.
Dedar Milano
Jean de Merry Textiles
Villa Nova/
Great Outdoors - A Holly Hunt Collection

ACCESSORIES

Planters & Decorative Accessories by Downtown
Planters by Inner Gardens
Collana Mirror - CURVA by Natasha Baradaran

PAINT

Ceiling Paint by Farrow & Ball

LIGHTING

Pari Pendant by Natasha Baradaran Collection

SOUTH TERRACE

AREA RUG

Frontgate

UPHOLSTERY

Palermo Sofa & Lounge Chairs by Frontgate
Ravello Dining Chairs by Frontgate
Aurora Chair by Made Goods

ACCESSORIES

Lanterns by Frontgate
Accessories by Inner Gardens
Throw Pillows by Natasha Baradaran
Planters & Bird Bath by Charles Jacobsen

OCCASIONAL

Jules Aluminum Side Table by Frontgate
Gravilla Coffee Table by Frontgate
Cove Dining Table by Frontgate
Baguette Coffee Table by Natasha Baradaran Collection

FABRIC

Frontgate
Opuzen
Perennials
Great Outdoors - A Holly Hunt Collection
Lulu DK



Renaissance

DESIGN STUDIO



MILLWORK & RESTORATION | ARCHITECTURAL HARDWARE | DECORATIVE PLUMBING | LIGHTING
972 N. La Cienega Boulevard, Los Angeles | 310.652.0964 | 22531 Ventura Boulevard, Woodland Hills | 818.222.2771
WWW.RDSTUDIOLA.COM



ANDREW BROWN INTERIORS

LE SALON DE REPOS (SECOND FLOOR)

Drawing inspiration from the same part of the world where Ned and Lucy Doheny and their designers turned to whilst furnishing their home in the late 1920s, Le Salon de Repos is an ode to European artists and designers. Features include a ceiling mural inspired by Matisse's La Danse; charcoal drawing-covered grasscloth panels; and an eclectic assortment of antiques, custom furnishings and art.

Designer Andrew Brown's curated, eclectic style has been described as "a mix of masculine glamour and brooding sensuality." Based in Birmingham, Alabama, Brown's projects have been featured in Veranda, Russian Elite Interior, Atlanta Homes & Lifestyles and Interiors.

ROOM SOURCES

FABRICS

Jim Thompson

GRASSCLOTH

Phillip Jeffries

GREEK KEY TRIM ON CORNICES & DRAPERY

Clarence House

SCONCES ON FIREPLACE WALL

Lladró

SCALLOPED SIDE TABLE

Made Goods

SERPENT TABLE

Cox of London through
Rose Tarlow

CEILING MURAL

Jan Roberts

CHARCOAL DRAWINGS ON GRASSCLOTH

William McLure

LARGE PHOTOGRAPH, "NEEMRANA", ALWAR, INDIA

David Hillegas

CENTER TABLE & WRITING DESK

Custom through MDM
Design Studio

SOFA & SKIRTED SLIPPER CHAIRS

Custom through Mark
Jordan Upholstery

FRAMING

Stonehenge

BOOKS

Kinsey Marable & Co,
Charlottesville, Virginia

TABLE LAMP

Mecox Gardens

HAIR ON HIDE UPHOLSTERY

Kyle Bunting

OLIVE JAR

Lee Stanton Antiques



ANDREW BROWN

INTERIORS

[ANDREWBROWNINTERIORS.COM](http://andrewbrowninteriors.com)



**KRISTEN
BUCKINGHAM**

MRS. DOHENY'S STUDY (SECOND FLOOR)

We have envisioned the "gun room" into a modern day women's inner sanctum. The room is an office, but also a den for relaxing. This world traveled woman hosts associates and friends leisurely with seamless indoor-outdoor living. Not everything in her life is as formal as the grandeur of the mansion. The feminine qualities of the floral prints are balanced perfectly with the masculinity of clean strong lines. This is a chic, comfortable place to get things done.

Kristen Buckingham brings a distinctly fresh take to designing interiors, putting tasteful personality back into the home. Often looking to the past for inspiration, her design philosophy is influenced in part by Albert Hadley's idea of chic suitability, making every space feel both effortless and polished. The design firm is dedicated to interpreting the clients' visions, aspirations and lifestyles to create inspired interiors that resonate with their personalities and sensibilities.

ROOM SOURCES

BULLION FRINGE SOFA, CHAIRS AND OTTOMAN

Marsden Fringe Collection by KB Bespoke

CENTER OTTOMAN

Vintage Textile Ottoman by KB Bespoke

HEXAGON ACCENT TABLE

Vintage from KB Showroom

PAIR OF SIDE TABLES

Caesarstone inlay tables by KB Bespoke

DESK

Vintage from KB Showroom

DESK CHAIR

Georgia Chair by KB Bespoke

SCREENS

Custom by Kristen Buckingham
with Paul Montgomery Wallpaper

ALCOVE HEXAGON TABLE

Featuring Azay Sable Linen by
Nicole Fabre Designs

LIGHTING

Vintage from KB Showroom

RUG

Woven Accents

SEAGRASS CARPET

Melrose Carpet

WALL UPHOLSTERY

Indian Lotus by KB Textiles installed
by Juan and Jose Garcia Wall Upholstery

DRAPES

Fez by KB Textiles made to measure
by Dulce Martinez

FRENCH RODS

Dan's Custom Metal

ART

Private Collection

ACCESSORIES

KB Showroom

CEILING PAINT

Wimborne White in Full Gloss
by Farrow & Ball

OUTDOOR FURNITURE

The Laurent Collection by KB Bespoke

WOODEN STOOLS

Vintage from KB Showroom

OUTDOOR RUG

Perennials

OUTDOOR FABRIC

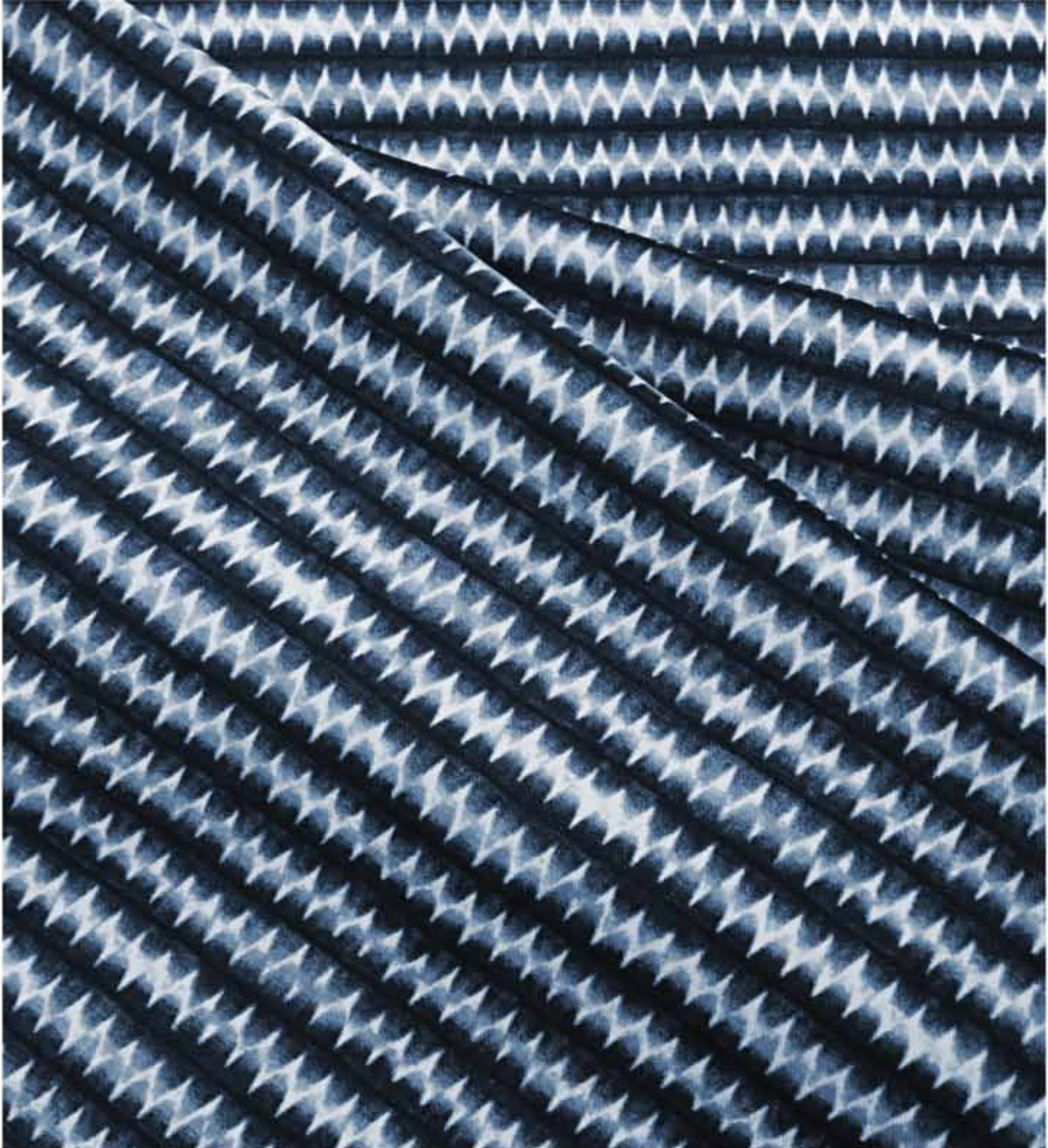
Robert Allen

OUTDOOR LANDSCAPING

Patricia Benner Landscape Design

KB

TEXTILES



Available at KRISTEN BUCKINGHAM 912 N La Cienega Blvd Los Angeles CA 90069 310.855.1180



NINA CAMPBELL

MR. DOHENY'S SUITE (SECOND FLOOR)

Nina Campbell is very proud to have been asked to participate in the Maison de Luxe Designer Show House 2015. We are creating a comfortable, classic but contemporary bedroom suite for the modern day Mr. Doheny. Our philosophy is always to create a haven away from the hassle of everyday life, incorporating the needs of today. Our room is calm with references of the past, our palette of soft greens enlivened with touches of color, blends of textures and patterns is designed to let us imagine that the owner has just left the room!

Nina Campbell is one of the world's leading interior designers. She has two shops in London, a bespoke British-made furniture collection as well as a brand of home accessories. She designs fabric and wallpapers with Osborne & Little and has a collection, Nina Home with Steinmart in the USA. Her interior design projects include a New York town house, a mansion in Wuxi, China, a house in Jordan, as well as countless properties in Europe and some hotels and restaurants. She has written five books on design, has lectured on design all over the world and 2015 sees her honored as a Pratt Legend in New York City.

ROOM SOURCES

CURTAINS AND BED CURTAINS

Valley Drapery

WALLPAPER, CURTAINS, UPHOLSTERY

Osborne & Little

BED CURTAINS

Pierre Frey Paris
Kneeder Fauchère
showroom Pacific Design
Center

BED CURTAINS

Chase Erwin

BATHROOM TERRY CLOTH

Holland & Sherry

TRIM

Samuel & Sons

PAINT

Farrow & Ball

RUG

Stark Carpets

BED

John Roselli

MATTRESS AND BOX SPRING

Vispring

OTTOMAN

O Henry House

MORGAN SOFA

O Henry House

CHAISE LONGUE

O Henry House

ARMCHAIR

O Henry House

HAIRY PAW DOORSTOP

Soane

NUREYEV TROLLEY

Soane

SMALL HALMA MAN

Soane

AMBER LIGHT

Soane

KLISMOS CHAIR

Soane

BLOWER CHAIR

Soane

'WHAT NOT'

Oomph

TINI TABLES

Oomph

SCALLOP CHAIR

Oomph

PILLOWS

Holland & Sherry

NEWPORT SQUARE MIRROR

Oomph

ANTIQUE CHAIRS

Nina Campbell
Tom Stansbury Antiques

OWL LAMP

Collier & Webb

CANNON LIGHT

Collier & Webb

ADAMS STYLE WALL SCONCE

Collier & Webb

DAISY PENDANT LIGHT FITTING

Hector Finch

NEWPORT SWING ARM FLOOR LAMP (BRASS)

Vaughan

PRESTON SWING ARM

Vaughan

LAMPSHADES

A Shade Above

LAMP - CM MOSS VILLA (CLARET)

Spitzmiller

LAMP - HAGER (PEACOCK) PLUS LAMPSHADE

Spitzmiller

OBJET D'ART

Hollyhock

OBJET D'ART FLOWER POTS

Tommy Mitchell

BED LINEN

Leontine Linens

BAR ACCESSORIES & GLASSWARE

Aspreys

ROOM SCENT - CANDLES, POT POURRI, BATH PRODUCTS

Agraria Home

TAP FIXTURE

ROHL

FAUX FLOWERS

Diane James

DESK ACCESSORIES

Nina Campbell

BATH LINEN - TOWELS

Steinmart

SHIPPING

Hedley's Humpers



CONSORT DESIGN

SOCIAL SALOON (FIRST FLOOR)

We wanted to give the social secretary room to a chic, modern speakeasy feel. The alcove off the main hallway provides the perfect spot for guests to stop in for a craft cocktail before dinner.

Consort is a high-end interior design firm founded by Mat Sanders and Brandon Quattrone, with projects in Los Angeles, New York, Phoenix and Telluride. Sanders is also the Editor at Large for MyDomaine. As a fixture of the U.S. design scene, Sanders is a champion of developing the interior design industry in the digital age. With a background in architecture, Quattrone has worked with SHoP Architects on groundbreaking projects like Jay Z's Barclays Center as well as the Shopbop office headquarters. Before launching Consort, Quattrone consulted on the design of the West Coast SoulCycle studios.

ROOM SOURCES

LIGHT FIXTURES

Sabin

SHELVES

Caesarstone

PAINT

Farrow & Ball

RUG

Lawrence of La Brea

FRAMING

L.A. Art Exchange

CUSTOM BAR TABLE

Bananas and Hammocks

CUSTOM SHELVES

Bananas and Hammocks

SEATING

Eccola

MIRROR

Eccola

PETROSSIAN
SALUTES THE
MAISON DE LUXE
DESIGNERS
WHO HAVE MADE
GREYSTONE ESTATE
Resplendent



RESTAURANT & BOUTIQUE
321 NORTH ROBERTSON BOULEVARD
WEST HOLLYWOOD, CA
310.271.6300



TIMOTHY CORRIGAN

ENTRY HALL & UPPER LANDING (SECOND FLOOR)

Inspired by the famed Beverly Hills that frame the view of Greystone, the entry and upper landing evoke a feeling of fun and glamour. The bright color palette is plucked from the flowers, swimming pools and California sky, while the mix of contemporary furnishings and antiques pays homage to a city that continues to move forward while revering its past. Plush velvet fabrics, playful rugs, gold-edged wallcovering and gilded accessories invoke a feeling of luxury amidst the playground of color.

Hailed in Architectural Digest as "Today's Tastemaker," Timothy Corrigan's clients include royalty, celebrities and corporate leaders. With offices in Los Angeles and Paris, his distinctive design philosophy of comfortable elegance has earned him a place on Architectural Digest's "AD100" list for the last ten years. His work has been published in numerous publications including Elle Decor, Luxe Interiors + Design, Veranda, Traditional Home, The New York Times and The Wall Street Journal. His critically acclaimed book, "An Invitation to Château du Grand-Lucé" (Rizzoli), chronicles the restoration that he conducted of his 18th-century listed château in the Loire Valley. He recently introduced the first fully integrated line of fabrics, trims, furniture and floor covering for Schumacher and Patterson, Flynn & Martin. In 2014, he received the "Star of Design Award" from the Pacific Design Center, and he was the first American designer honored by the French Heritage Society. Timothy is currently designing a collection of bath fixtures for THG Paris, furniture for Moissonnier and lighting fixtures for Bagues-Paris, all to debut in 2016 and 2017.

TIMOTHY CORRIGAN, INC | 5818 W. 3RD STREET | LOS ANGELES, CA 90036
323.525.1802 | INFO@TIMOTHY-CORRIGAN.COM | TIMOTHY-CORRIGAN.COM

ROOM SOURCES

AVALON SCONCES

Fuse Lighting

BLACK & WHITE PHOTOS

Trowbridge

BLACK LACQUER COLUMNS

JW Custom Wood

BLACK WINGED SPHINXES

Timothy Corrigan Antiques

CHRISTOPHER GUY WINGED BACK CHAIRS

Grayson Luxury

WINGED BACK CHAIR FABRIC

Zoffany

WING BACK CHAIR UPHOLSTERY

Müller & Sons

DORCHESTER BLUE ARMCHAIRS

Fendi Casa

DORCHESTER CHAIR PILLOW FABRIC

Zoffany

DORCHESTER CHAIR PILLOW TRIM

Zoffany

DRAPERY FABRIC

Manuel Canovas

DRAPERY TRIM

Manuel Canovas

DRAPERY FABRICATION

Sagitario's Draperies

DRAPERY HARDWARE

J.F. Fabrics

EAGLE SCULPTURES

Timothy Corrigan Antiques

MISSONI RUGS

Stark Carpet

1940S FRENCH ARMCHAIRS

Timothy Corrigan Antiques

1940S FRENCH ARMCHAIR FABRIC

Zoffany

1940S FRENCH ARMCHAIR TRIM

Colefax & Fowler

1940S FRENCH ARMCHAIR UPHOLSTERY

Müller & Sons

GILTWOOD SHELL

Timothy Corrigan Antiques

GOLD TRAY

Fendi Casa

GOLD VASES

Fendi Casa

GOLDEN ARROW TABLES

Timothy Corrigan Home

IRON URN

Timothy Corrigan Antiques

JACQUES ADNET LAMP

Timothy Corrigan Antiques

MIDCENTURY SIDEBOARD

Timothy Corrigan Antiques

MURANO LAMPS

Timothy Corrigan Antiques

LAMPSHADES

Paul Ferrante

PAIR OF BALTIC WOOD CHAIRS

Timothy Corrigan Antiques

FABRIC FOR FRONT OF BALTIC CHAIR

Manuel Canovas

TRIM FOR BALTIC CHAIR SEAT CUSHION

Janet Yonaty

FABRIC FOR BACK OF BALTIC CHAIRS - TIMOTHY CORRIGAN PICKFAIR PAISLEY

Schumacher

PAIR OF BRANCH LAMPS

Timothy Corrigan Antiques

PAIR OF CAPRICCIO PAINTINGS

Timothy Corrigan Antiques

LEOPARD CONSOLE TABLES

Timothy Corrigan Home

PAIR OF FLUTED COLUMN SIDE TABLES

Timothy Corrigan Antiques

PAIR OF OVAL SIDE TABLES

Timothy Corrigan Antiques

PAIR OF VERRE EGLUMISE MIRRORS

Timothy Corrigan Antiques

REGINA COFFEE TABLES

Fendi Casa

ROCKFACE WALLPAPER

Fromental

WALLPAPER INSTALLATION

Rob Roy Cesar

ROCOCO GILTWOOD MIRROR

Timothy Corrigan Antiques

ROUND LEATHER BOXES

Fendi Casa

SMALL EAGLE STATUE

Timothy Corrigan Antiques

SOFA AND PILLOW FABRICATION

Erez Talmor

SOFA FABRIC

Manuel Canovas

PINK SOFA PILLOW FABRIC

Zoffany

PINK SOFA PILLOW TRIM

Cowtan & Tout

SHEEPSKIN FOR SOFA PILLOWS

Garrett Leather

STACKED ROCK CRYSTAL LAMP

Timothy Corrigan Antiques

STACKED ROCK CRYSTAL LAMPSHADE FABRIC

Eden Hall

STORAGE, PICK-UP & DELIVERY

Air-Sea Packing Group, Inc.

LEOPARD CONSOLE TABLE FABRIC - TIMOTHY

CORRIGAN MADELINE VELVET
Schumacher

TRELLIS COLUMN AND VASE

Accents of France

VAUGHN CHANDELIER

Arteriors

ZEBRA WOOD CONSOLE TABLE

Timothy Corrigan Home

ZUBER PANELS

Timothy Corrigan Antiques



TIMOTHY CORRIGAN

LIBRARY (FIRST FLOOR)

Step into the world of a gentleman (or gentlewoman) architect's home office. The bookcases are lined with architectural drawings along with photos and accessories throughout the room. Since the original barrel vaulted ceiling was removed some years ago, and only a completely plain ceiling remains, architectural detailing is playfully added through the use of a Piranesi-inspired design that seems to open the library up to the sky above. A custom rug grounds the space while subtly delineating the different seating areas. Drapery-lined walls envelop the room and create a wonderful cocoon-like environment. The warm color palette of red, camel and cream, along with comfortable furnishings, makes this a space where one can imagine a new architectural masterpiece is created.

Hailed in Architectural Digest as "Today's Tastemaker," Timothy Corrigan's clients include royalty, celebrities and corporate leaders. With offices in Los Angeles and Paris, his distinctive design philosophy of comfortable elegance has earned him a place on Architectural Digest's "AD100" list for the last ten years. His work has been published in numerous publications including Elle Decor, Luxe Interiors + Design, Veranda, Traditional Home, The New York Times and The Wall Street Journal. His critically acclaimed book, "An Invitation to Château du Grand-Lucé" (Rizzoli), chronicles the restoration that he conducted of his 18th-century listed château in the Loire Valley. He recently introduced the first fully integrated line of fabrics, trims, furniture and floor covering for Schumacher and Patterson, Flynn & Martin. In 2014, he received the "Star of Design Award" from the Pacific Design Center, and he was the first American designer honored by the French Heritage Society. Timothy is currently designing a collection of bath fixtures for THG Paris, furniture for Moissonnier and lighting fixtures for Bagues-Paris, all to debut in 2016 and 2017.

TIMOTHY CORRIGAN, INC | 5818 W. 3RD STREET | LOS ANGELES, CA 90036
323.525.1802 | INFO@TIMOTHY-CORRIGAN.COM | TIMOTHY-CORRIGAN.COM

ROOM SOURCES

CUSTOM ARCHITECTURAL BOOKSHELF PANELS
Fromental

BENCH FABRIC
Harlequin

BENCH FABRICATION
Ty-Teck

BLACK & WHITE ARCHITECTURAL PHOTOS
Timothy Corrigan Home

FRAMES
Vandeuren Galleries

BONE STAIR MODEL
Made Goods

CARVED WOOD PLAQUE
Restoration Hardware

CUSTOM CEILING WALLPAPER
Iksel

SOFFIT WALLPAPER
Phillip Jeffries

WALLPAPER INSTALLATION
Erick Bloom

BUSTS IN GLASS CASE
Timothy Corrigan Antiques

**TIMOTHY CORRIGAN MARQUETRY
COFFEE TABLE**
Moissonnier

COLUMNS & URNS
Timothy Corrigan Antiques

CUSTOM RUG
Kyle Bunting

GALILEO TABLE/DESK
Fendi Casa

TIMOTHY CORRIGAN DESK LAMP
Baguès - Paris

DRAFTING CHAIR
Timothy Corrigan Antiques

DRAFTING CHAIR CUSHION - TIMOTHY CORRIGAN DIRECTOIRE TAPE
Schumacher

19TH C. DRAFTING TABLE
Timothy Corrigan Antiques

DRAPE FABRIC - TIMOTHY CORRIGAN HEDGEROW TRELLIS
Schumacher

DRAPE FABRICATION
Ty-Teck

HAND COLORED ENGRAVINGS
Timothy Corrigan Antiques

1960S HEXAGON GAME TABLE
Timothy Corrigan Antiques

LEAF CROWN ON STAND
Timothy Corrigan Antiques

METAL MODELS
Made Goods

NEOCLASSICAL MIRROR
Timothy Corrigan Antiques

PAINT
Farrow & Ball

PAINTER
Sergio's Professional Painting

RED SOFA PILLOWS - TIMOTHY CORRIGAN DIRECTOIRE TAPE
Schumacher

SHAGREEN OBELISKS
Made Goods

SILVER BOX
Fendi Casa

SILVER VASES
Fendi Casa

SOFA
Timothy Corrigan Home

SOFA FABRIC - TIMOTHY CORRIGAN CHANTILLY
Schumacher

TIMOTHY CORRIGAN ECLIPSE CHANDELIERS
Baguès - Paris

TIMOTHY CORRIGAN LAFAYETTE SIDE TABLE
Schumacher

TIMOTHY CORRIGAN SALTWORKS CHAIRS
Schumacher

SALTWORKS CHAIR FABRIC - TIMOTHY CORRIGAN PARC MONCEAU
Schumacher

TIMOTHY CORRIGAN WAVE CHAIRS
Schumacher

TIMOTHY CORRIGAN WAVE CHAIR FABRIC - PARC MONCEAU
Schumacher

THROW
Vivre Luxe

UPHOLSTERED CLUB CHAIRS
Timothy Corrigan Antiques

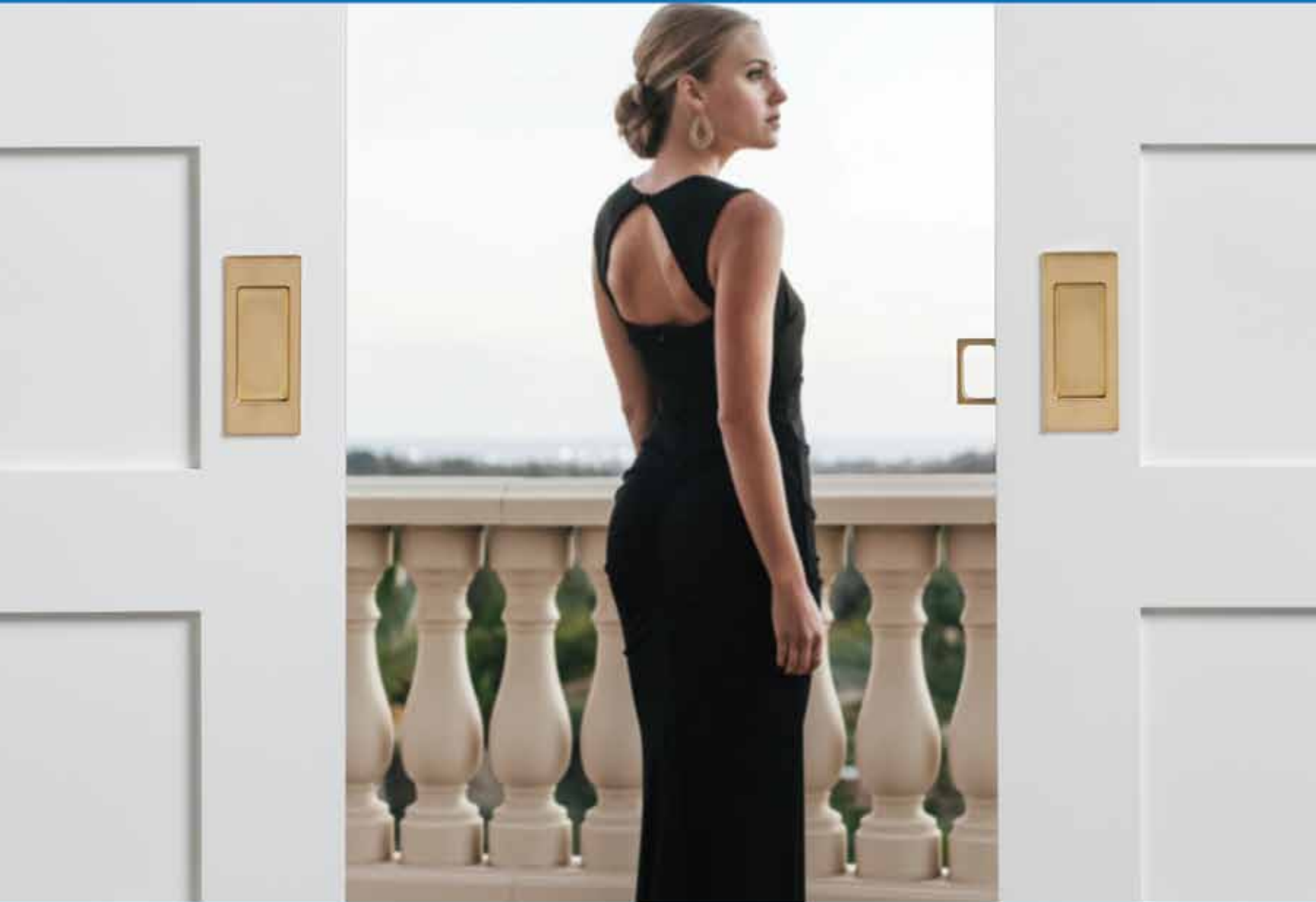
WOOD STAIR MODEL
Timothy Corrigan Antiques

MIRRORED OBELISK LAMPS
Timothy Corrigan Antiques

LAMPSHADES
Reborn

ARCYLIC NILE CHAIR
Private Label, Dragonette Ltd.

AT FIRST GLANCE
MAKE EVERYONE STARE



BALDWIN OWN IT.™

Baldwin is a proud sponsor of the Friends of Greystone on-going restoration project.

BALDWINHARDWARE.COM



PATRICK DRAGONETTE

A ROOM WITHOUT A VIEW (FIRST FLOOR)

In a home with spectacular views, I was presented a room with relatively no view because of how the house was sited. I chose to embrace the fact, and in doing so, have created a place where you can retreat and kick back. A modern day lounge where you can enjoy a drink at the bar, relax on the cushy sofa or play a rousing game of ping-pong on the custom table.

Patrick Dragonette established his eponymous showroom and design studio in Los Angeles in 1997. Dragonette Ltd. has become one of the country's top resources for high-end mid-20th-century design, and has created many multifaceted interiors for clients across Southern California.

ROOM SOURCES

SKULL AND CROWN SCULPTURE
Onik Agaronyan

CUSTOM BAR AND STOOLS
Bausman & Company

CUSTOM HAIR ON HIDE FOLDING SCREEN
Kyle Bunting

CUSTOM PING-PONG TABLE
Caesarstone

CEILING FIXTURES
Downtown

VINTAGE FURNITURE AND ACCESSORIES
Dragonette Ltd.

**"TROUSDALE CABINET",
"SHEEP OF ANOTHER COLOR",
"SANTORINI CHAIR" AND
TITIA ESTES TABLE LAMPS**
Dragonette Private Label

**UPHOLSTERY AND DRAPERY
FABRICS**
Duralee

PAINT
Farrow & Ball

RUG
Fort Street Studios

SIDE TABLES BY KIMBERLY DENMAN
Habité

**CUSTOM PAINTED CEILING
MEDALLIONS**
Halo Murals and Finishes
Patrick Holder

BESPOKE WALLCOVERING
Fromental

WALL SCONCES
Jason Koharik

WALLCOVERING INSTALLATION
Jesse Hernandez Wallcoverings

PORCELAINS
Lladró

ART FRAMING
Sherman McNulty

CUSTOM DRAPERY FABRICATION
Valley Drapery and Upholstery

GRACEFUL GLAMOUR

*The new Michael Berman
Graceline™ Lavatory Faucet
from ROHL in Satin Gold*



SNYDER
DIAMOND



CLIFF FONG
MATT BLACKE INC.

BREAKFAST ROOM & SOLARIUM (FIRST FLOOR)

I am really inspired by the history and character that exists at Greystone. It's less common during the course of our work here in Los Angeles that we are paired with a house with as substantial a heritage, much less anything comparable in scale, details or grandeur. The original manner in which I imagine the Doheny family lived in this home is also intriguing. The idea of recreating a similar level of sophistication and luxury is inspiring. Interpreting this in a fashion that feels fresh and relevant today gives us the challenge and opportunity to hopefully create something very special.

As an interior designer, Cliff creates unique, personal and often unexpected environments, drawing from various inspirations. His work is largely residential but includes many notable commercial spaces such as Madison Gallery, Michael Voltaggio's Ink restaurant and Pistola. In 2009, with partners, he opened Galerie Half, a sprawling emporium of 20th-century design, European antiques, architectural elements and art.

ROOM SOURCES

BREAKFAST ROOM

CHANDELIER
Galerie Half

GUSTAVIAN STOOLS
ROCOCO SIDE CHAIRS
LOUNGE CHAIRS
BIEDERMEIER TILT TOP
SIDE TABLES
PAIR OF GUSTAVIAN
GLASS CABINETS
PAIR OF GUSTAVIAN
CHESTS
Lief

ARNE HOVMAND-OLSEN
ARMCHAIRS
J.F. Chen

SCONCES
Dispela Antiques

RUG
J. Ilouliau

DRAPERY
D'Vine Anne

ACCESSORIES
Pat McGann

ARTWORK
Kohn Gallery

MURAL
Hattas Public Murals

DINING TABLE
Galerie Half

KAARE KLINT SOFA
Galerie Half

SOLARIUM

SOFA
ARMCHAIRS
BENCH
Bausman & Company

CONSOLE
Lief

CHANDELIER
Liz's Antique Hardware

RUG
Elizabeth Eakins

PLANTS
The Tropics

PLANTERS
J.F. Chen

CONTRACTOR
POD Unlimited, Inc.

PAINTING
CC Masterworks

ELECTRICAL
Gazelle Electric

PAINT
Farrow & Ball



OLIVER M. FURTH

RECEPTION HALL (FIRST FLOOR)

This room's front and center location would be where the Dohenys—or the Dohenys of today—would receive their guests. It's a place to welcome as well as to show off. I saw this space as an opportunity to champion 21st-century design while not sacrificing purpose or beauty. I'm proud to feature a selection of works by some of the most exciting decorative artists, sculptors and makers working around the world today. Sourced from five continents, and all exclusively unique or limited-edition, the pieces I have selected demonstrate innovations in form and material, pushing forward the dialogue in this cross-section of art and furniture.

A native Angelino and fourth-generation Californian, Oliver M. Furth is a fixture in his city's design and cultural communities. In addition to his design practice, Furth consults for the Los Angeles County Museum of Art (L.A.C.M.A.), and is Chair Emeritus of their Decorative Arts Council. Recently Furth launched LA><ART><DESIGN, a new non-profit platform for contemporary design as it relates to the city of Los Angeles. Furth has received accolades such as Elle Decor's A-List as one of 'Five Young Designers to Watch', the coveted 'Design Star' award from the Pacific Design Center, and most recently, The Hollywood Reporter included him in their list of the "25 Most Influential Interior Designers in Hollywood."

ROOM SOURCES

CEILING INSTALLATION
Arktura

FLOORCOVERING
Chelsea Oliver Studio

FABRICS
Highland Court/Duralee
Fabrics Ltd.

FURNITURE
Bae Se Hwa
Benjamin Kicic
Carpenters Workshop
Gallery
Cristina Grajales Gallery
Eric Schmitt
Friedman Benda
Gloria Cortina
Seomi International
Kang Myung Sun
Kim Sang Hoon
Prestigio Custom Furniture
Ralph Pucci International
Blackman Cruz
Dan Pollock
Stefan Bishop
Tanya Aguiñiga
Volume Gallery
Wendell Castle

FINE ART
Bernard Piffaretti
Cherry and Martin Gallery

LIGHTING
Bahk Jong Sun
Billy Cotton
Christophe Côme
Cristina Grajales Gallery
Ferrer
Gallerie Seomi
Michael Anastassiades
Lianne Gold
Ralph Pucci

ACCESSORIES
Adam Silverman
Alex Reed
Blackman Cruz
Christophe Côme
Cristina Grajales Gallery
David Wiseman
Dougall Paulson
Elyse Graham
Haas Brothers
Jonathan Nesci
Patrick Parrish Gallery
R & Company
Ronel Jordaan
Steven & William Ladd
Tabor & Villalobos

DELIVERY & TRANSPORT
Cadogan Tate
CR Creative Services



JANE HALLWORTH HALLWORTH DESIGN

MRS. DOHENY'S PORCELAIN ROOM THE DINING ROOM (FIRST FLOOR)

A room left behind after the fall of a great family.

Known for a strong architectural foundation, an innovative use of color and idiosyncratic combinations of furniture she collects for her clients—Jane Hallworth has quietly become a go-to resource for Los Angeles elite looking to infuse their homes with imaginative mixes of blue-chip 20th century, cutting-edge contemporary pieces and rarified antiques.

ROOM SOURCES

ANTIQUE GILTWOOD AND CONCRETE FURNITURE

James Plumb at Obsolete

ACCESSORIES

Blackman Cruz
Dragonette
Onik at Downtown
Nickey Kehoe

ARTWORK

Kohn Gallery

BRONZE MOTHS

Haunt by Jane Hallworth
at Blackman Cruz

CHAIR TEXTILE

Hyla Frank

CONSOLE & ACCESSORIES

JF Chen

COPPER WEBS

Kevin Inkawich at Hallworth Gallery

CUSTOM COMMODES

Damian Jones at Blackman Cruz

DECORATIVE URN

Niermann Weeks

DINING CHAIRS & ACCESSORIES

Lief Almont

ETAGERES

Therien

FLORAL ARRANGEMENTS

Seed Floral

INSTALLATION

Hangman Designer Services

INSTALLATION

Modern Delivery Service

SCULPTURE - LION PAWS

Compass

NYPHEMBURG PORCELAIN BIRDS

August

RUG

Jamal's Rug Collection

SIDE CHAIRS & ACCESSORIES

Galerie Half

TABLECLOTH FABRIC

Diamond Foam & Fabric

TABLE CLOTH FABRICATION/DECOR

Daniel Pontius

TABLE LAMPS

Iris by Jane Hallworth
at Blackman Cruz

WALL TEXTILE

Mary Little



LAUREN LIESS
LAUREN LIESS & CO.

THE STAIR TOWER SITTING ROOM & TERRACE (THIRD FLOOR)

A room of juxtapositions—black and white, new and old, light and dark—the stair tower sitting room is tucked away and is an escape of sorts for those who want to read, relax and think on their own, or for a private conversation between friends. Matte black walls darken the room creating a sense of privacy and intimacy, and make for a striking contrast between it and the open air terrace just through its doors. A love of nature is infused throughout both spaces—from the ‘Wild Chicory’ pattern on the linen curtains to the collected natural objects displayed in Greystone’s original cabinetry to the fresh plantings throughout, and a black and white palette with touches of green allows the striking bones of Greystone Mansion to take front and center. The terrace is ready for parties, with a massive outdoor sectional, a mix of cocktail tables and stone dining table.

Washington, DC decorator Lauren Liess appreciates relaxed, natural, beautiful living. Down-to-earth and free-spirited, she embraces imperfection and the general mayhem of life with a laid-back approach to design and the home. Lauren writes the popular design blog, Pure Style Home, and her textile collection, Lauren Liess Textiles, is inspired by common “weeds” and wildflowers around the countryside. Her first design book, in partnership with Abrams Publishing, Habitat: The Field Guide to Decorating, was released in Fall 2015.

ROOM SOURCES

THE STAIR TOWER SITTING ROOM

PAINT

Farrow & Ball

QUARTZ SCONCES

The Urban Electric Co.

VINTAGE PENDANT LIGHT

Rewire LA

CHAIRS

Lee Industries

VELVET PILLOW FABRIC

Arabel Fabrics

ZEBRA OTTOMAN

Emporium Home

BRASS TRAY

NostalgicTrends

VINTAGE MOROCCAN RUG

Woven Accents

SEAGRASS RUG

Fibreworks

LARGE ARTWORK

John Guinan

CURTAIN FABRIC

Lauren Liess Textiles

DRAPERY HARDWARE

Antique Drapery Rod

CABINET KNOBS

Sun Valley Bronze

FLOOR LAMPS

Arteriors Home

NATURAL PAPER LAMPSHADE

Visual Comfort

CURTAIN FABRICATOR

Paul David Design

TERRACE

FLOOR PAINT

Farrow & Ball

OUTDOOR SECTIONAL SOFA

Lee Industries

“SQUIDFLOWER” PILLOW FABRIC

Lauren Liess Textiles

ONYX PIXYL OUTDOOR PILLOWS

Frontgate

BLACK PILLOW FABRIC

Kravet

BLACK AND WHITE OUTDOOR PILLOWS

AmoreBeaute

CONCRETE COCKTAIL TABLES

CB2

TEAK WOOD ROOT COFFEE TABLE

From The Roots LA

LANTERNS/CANDLES

Frontgate

OUTDOOR DINING TABLE

Made Goods

CHAIRS

Made Goods

DECORATIVE CONCRETE BALLS

Made Goods

POTTED TREES AND PLANTS

Rolling Greens



MASSUCCO WARNER MILLER

GIRL'S BEDROOM & DRESSING ROOM (SECOND FLOOR)

The girl's bedroom and dressing room are a fresh take on MWM's signature style. From the rose gold hand-painted peacock wallpaper, to the hammered canopy bed, to the brass angora geometric stools, there's something in the room to appeal to every kind of girl, and we designed our space with the hope of every girl wanting to call this room her own!

MWM blends color and textural palettes that range from bold, stunning and edgy, to soft, tranquil and serene, while always being clear, fresh and on point. The team's design portfolio is diverse, but the result is a beautiful, well-designed home and happy client, every time.

ROOM SOURCES

ACCENT TABLE

Made Goods

ART ABOVE DRESSER

John Wolf
Rose Tarlow

BED

Made Goods

BEDDING

Julia B

BEDROOM THROW

PILLOW FABRIC

Lulu DK
Duralee

BEDROOM HEADBOARD &

THROW PILLOW FABRIC

Schumacher

LAMPS

Hwang Bishop
Carl's Lamps

BENCH

Lee Industries
Witford

BENCH FABRIC

Romo
Thomas Lavin

CABINET HARDWARE

Baldwin

WALL-TO-WALL CARPET

Stark Carpet

CEILING FIXTURES &

SCONCES

The Urban Electric Co.

DRAPERY HARDWARE

Lundy's Company

FLOOR LAMP

Arteriors

LOUNGE CHAIR

Lee Industries
Witford

LOUNGE CHAIR

PILLOW FABRIC

Pindler & Pindler

NIGHTSTANDS

Made Goods

TRIM FOR DRAPERIES, WINDOW SEAT CUSHION

Samuel & Sons

WALLPAPER

de Gournay
Nicky Rising

DRESSING ROOM

AREA RUG

Tai Ping

DRESSING ROOM

DRAPERY FABRIC

Pindler & Pindler

DRESSING ROOM

MIRRORS

Downtown

DRESSING ROOM

OTTOMAN

Lee Industries
Witford

DRESSING ROOM THROW

PILLOW FABRIC

Christopher Farr
Cloth
Thomas Lavin

DRESSING ROOM

THROW PILLOWS

Lance Wovens, Harbinger
by Hand

DRESSING ROOM THROW

PILLOW FABRIC

Tulu
Nicky Rising

DRESSING ROOM VANITY

Bausman & Company

DRESSING ROOM

VANITY CHAIR

Niermann Weeks
Egg & Dart



AMY MEIER, AMY MEIER DESIGN INC

GRAND HALLWAY, STUDY & SITTING ROOM (SECOND FLOOR)

I believe that good design satisfies the body's innate need for comfort and the soul's thirst for style. And while one doesn't usually think of a hallway, great or otherwise, as a place of comfort or style, I think this particular space is the perfect place to create and showcase both.

You see, a hall can be both a place of passage and a place to gather, both utilitarian and romantic at the same time. And in that sense, I want to bring guests on a journey, creating an ethereal mood that pays homage to an idea of the past, but as seen through and reflected by our modern sensibilities. There is an innate sense of escapism, a pleasant fantasy of blurred colors and soft edges that warmly wraps us up and allows us to dream. But this comfort is juxtaposed by a sleek and strong contemporary ethos that may reflect our fantasy, but reminds us of our place in time.

In 2009, Amy Meier founded the eponymous Amy Meier Design Inc, an exclusive, full-service design firm and boutique located in Rancho Santa Fe, California. With a bachelor's degree in fine arts from the University of Colorado and a master's in design from Parsons, Amy built her resume around both graphic and fashion design, before discovering her true passion and purpose in interiors. Her design, while brimming with personality and innovation, is built upon the bedrocks of quality and tradition. Amy effortlessly juxtaposes this with her modern sensibility, effortlessly commingling bespoke furnishings with meticulously curated fine art and antiques, creating timeless spaces far greater than the sum of their individual parts.

ROOM SOURCES

GRAND HALLWAY

CEILING LIGHT FIXTURE

Dennis & Leen

SCULPTURE

Lori Cozen-Geller,
Madison Gallery

SCONCES

The Urban Electric Co.

MURAL WALLPAPER

Paul Montgomery

SWAN GARDEN

CHAIRS

Seat Fabric,
Cowtan & Tout
Chair, Amy Meier
Design

PAINTING

Joan Bonetti

PAINT

Farrow & Ball

MADISON GALLERY

SCULPTURE

Lori Cozen-Geller,
Madison Gallery

STUDY

PLASTER WALLPAPER

Studio E

SWEDISH SECRETARY & CHAIR

C'est la vie Antiques

ANTIQUE CHAIR FABRIC

Cowtan & Tout

PORCELAIN ORCHIDS

Cote Jardin Antiques

TABLE LAMP

Dennis & Leen

ANTIQUE CHANDELIER

Amy Meier Design

SITTING ROOM

SOFA & SLIPPER

CHAIR FABRIC
Quadrille

PILLOW FABRICS

Rogers & Goffigon Ltd.

TRIMMINGS

Samuel & Sons

SCREENS

Cowtan & Tout

RUG

Tai Ping Rugs

STONE PEDESTALS

Caesarstone

PLANTERS

Dennis & Leen

PLANTINGS

Orchid de Oro

FIRE BOX SCULPTURE

Kathryn McCoy Design

ANTIQUE PLASTER RELIEF

Amy Meier Design

ACCESSORIES

Formations

PAINT

Farrow & Ball

ART

Udo Noger, Madison
Gallery

HALLWAY

SWEDISH CLOCK

C'est la vie Antiques

TABLE SKIRT, SCREEN FABRIC & PILLOW TRIM

Cowtan & Tout

TABLE SKIRT CUSTOM APPLIQUE

Wende Cragg,
Applique Artistry

RUG

Samad Rugs

SCONCES

The Urban Electric Co.

PAINT

Farrow & Ball

LANTERN

Dennis & Leen

FARROW & BALL

CRAFTSMEN IN PAINT AND PAPER



DISCOVER OUR NEW WALLPAPERS IN SHOWROOMS, STOCKISTS AND ONLINE

WWW.FARROW-BALL.COM

Walls: Feather Grass BP 5102, Woodwork: Studio Green® and Pointing® Estate Eggshell

Stunning Simplicity. Beautifully British.



This classically styled ROHL Perrin & Rowe® Kitchen Faucet was inspired by the reigns of four successive British monarchs, Kings George I-IV. Known for symmetrical lines and balanced features, Georgian design is comfortable in both formal and relaxed

environments. Authentically crafted in Great Britain, using innovative technology that combines the past with the present, this Collection offers exquisite style and uncompromising performance. Exclusively from the House of ROHL™.

*Sold exclusively through
fine decorator plumbing & hardware
showrooms nationwide.*

To learn more, visit rohlhome.com

ROHL
Authentic Luxury for Kitchen and Bath®



BRIAN PAQUETTE INTERIORS

HAMMERSMITH WEST (SECOND FLOOR)

Jackie Kennedy Onassis and Lee Radziwill escape the trappings of Newport and arrive in California during the summer of 1960. They seek a retreat—a place to read, relax and experience the changing world around them without familial obligations. A soft palette and curved lines inspired by 1960s California, Morocco and Paris in the 20s swirl together with earthy incense and the sounds of Arlo Guthrie and the Grateful Dead on the record player. Walnut, ceramic, linen, brass and travertine join forces to create a warm, inviting space. It might seem as if one were looking at this ladies' lounge through rose-colored glasses...

Coming from a background in conceptual art, Brian Paquette has always been fascinated by how we interact with art in space. Art is not just something to frame on a wall, and artists are not just passive players in our lives—everything leaves an imprint. Brian Paquette's aesthetic is built up of all the experiences, all the places and all the people he carries with him. After all, "Nothing is interesting unless it's personal."

ROOM SOURCES

FURNITURE

Lawson Fenning

FABRIC

Zak + Fox

LIGHTING

Jason Koharik
Victoria Morris

RUGS

Samad
AVO

PAINT

Farrow & Ball

ACCESSORIES

Made Goods
Lawson Fenning
Apparatus
Harbinger
Hollywood At Home

ART

Michelle Armas
ER Studio

MIRROR

Egg & Dart
Niermann Weeks

HARDWARE

Baldwin

BRIAN PAQUETTE

INTERIORS

SEATTLE, WASHINGTON





PLATNER & CO.

FEMME SUITE (THIRD FLOOR)

The objective of our design is to highlight the room's historic architectural features and use classic transitional furnishings to create a timeless feminine guest retreat. We have curated fabrics that reflect our design essence which melds casual luxury with soft romance and femininity. Many of the fabrics are found within the Peggy Platner Collection. We have designed a custom bed in our rich blush velvet accented with decadent silk bedding. The palette is light, fresh and evocative of delicate blossoms, with touches of luminous materials that capture and reflect the room's natural light.

The mother-and-daughter duo behind Platner & Co. are known for the detail and sophistication they bring to their residential and commercial projects. Their spaces embody the casual elegance of Southern California living. After years of integrating custom furnishings and architectural details into their work, the duo has launched a new luxury fabric line, the Peggy Platner Collection by Platner & Co.

ROOM SOURCES

BED

Platner & Co. Custom Design

BEDDING

Vivre Luxe
Peggy Platner Collection at Thomas Lavin

MATTRESS

Custom Comfort Mattress

FABRICS

Peggy Platner Collection
Jab
Hodsoll McKenzie
Opuzen

WALLPAPER

Stark

DRESSERS

Jean De Merry

DRAPERIES

Preferred Window Coverings

UPHOLSTERY

Lola's Interiors

LIGHT FIXTURES

Fuse at Thomas Lavin

CHAIR

Bright at Thomas Lavin

RUG

Samad

ACCESSORIES

Dragonette

LAURA VIAPIANO PAINTING

John Wolf Fine Art

WALLPAPER HANGER

Jesse Hernandez
Wallcovering

HILARY TAUB PAINTING

Mariela Ciccone for
Thomas Lavin

TABLE

Tuell & Reynolds at
Thomas Lavin

MIRROR

Castle Antiques

PAINT

Farrow & Ball

WE CONNECT THOSE WHO LOVE DESIGN.

FROM ARCHITECTS TO BUILDERS, FROM FABRICATORS TO FABRICS, LUXESOURCE.COM IS THE GO-TO DESTINATION FOR ALL THINGS LUXURY IN RESIDENTIAL DESIGN.



DESIGN RESOURCES

An invaluable tool to connect with design professionals, offering services from interior design to architecture, including kitchen and bath, flooring, lighting and more.

#LUXEDAILY

A design blog from the editors of *Luxe Interiors + Design*, featuring ideas, trends and happenings in luxury home design.

luxe.
interiors + design



pinterest.com/luxemagazine



twitter.com/luxemag



facebook.com/luxemagazine



instagram.com/luxemagazine



REATH DESIGN

BOY'S BEDROOM & BATH (THIRD FLOOR)

Tucked away on the top floor, this bedroom belonged to the Doheny's first-born son, Edward 'Larry' Doheny. We played with the idea that this lived-in space saw two design phases: the first phase overseen by Mrs. Doheny and her designer, and the last by Larry himself. Left to his devices, Larry spent his childhood and teenage years subjecting the room to his changing interests and making the space his own.

Informed by her background in textile design, Reath Design's Frances Merrill puts her love of color, pattern and texture at the center of her body of work. Striving to create spaces meant to be lived in, not just looked at, her interiors are natural, layered, collected works meant to evolve with the people that live in them. A belief that sentimental objects always have a place in one's home is a tenet Merrill steadfastly adheres to.

ROOM SOURCES

BEDROOM

BEDS

Bausman & Company

RUGS

Lawrence of La Brea

BEDROOM LAMPS

DWR
Blu Dot
The Urban Electric Co.

BOOKCASE

Made Goods

WALLPAPER

Farrow & Ball

PAINT

Farrow & Ball

VALET/BRASS STATUE

Darren Ransdell Design

LOG STOOL

Monroe Workshop

CUSTOM PILLOW FABRICS

Kari Fischer
Noblis
Johnstons of Elgin
Idarica Gazzoni
Kravet

BATHROOM

SINK HARDWARE

ROHL

BATHROOM LIGHTING

Lantern Masters, Inc.



REDMOND ALDRICH DESIGN

MURDER SALON (FIRST FLOOR)

We have transformed the Murder Salon into a portrait painting studio for the lady of the house. She is an artist and a zoologist, and this is where she paints and entertains her groovy friends. Our vision was to have the walls papered within the panels in a gilt de Gournay paper with discreet crows lurking in the branches, referencing a murder of crows—the collective noun for a group of crows. The rest of the furniture is simple, feminine and modern for contrast. The feeling is sinister and elegant, with zoological elements throughout.

Chloe is a graduate of Harvard University's architecture school, and founded Redmond Aldrich Design in 2005. Born with a passion for flowers and fabrics and a belief that interiors matter deeply, Chloe finds inspiration in classic design and enjoys updating this aesthetic with a modern edge.

ROOM SOURCES

HONEYCOMB CONSOLE
Ironies

"CLOUDED JUDGEMENT"
Megumi Arai

POP FLUSHMOUNT
Urban Electric

**CUSTOM URBAN
SMOKE BELL**
The Urban Electric Co.

FLINT SCONCE
Caste Design

ARMLESS SOFA
Lee Industries

SOFA FABRIC
Sandra Jordan

SOFA BASE FABRIC
Rogers & Goffigon

IKAT SOFA PILLOWS
Birmingham & Co

**LEATHER LOUNGE
CHAIRS**
Lee Industries

**LOUNGE CHAIR PILLOW
FABRIC**
Schumacher

THROW
Sandra Jordan

**FAUX SHAGREEN
SIDE TABLE**
Made Goods

**BRIDGER OVAL
SIDE TABLE**
Caste Design

WALTON FORD PRINTS
Walton Ford

**BIRDS OF PARADISE MIR-
ROR**
Codor Design

CHAISE LOUNGE CHAIR
Vintage

CHAISE HEAD PILLOW
Holland & Sherry

LINEA FLOOR LAMP
Baker

SPLATTER AREA RUG
Custom by Redmond
Aldrich Design

TERRARIUMS & FLORALS
Bloom and Plume

**CUSTOM TERRARIUM
STANDS**
Andrew Isley

ARREDOLUCE EASEL
Fat Chance Antiques

**TRACTOR COUNTER
STOOL**
Design Within Reach

BRASS SIDE TABLE
Coup D'etat

TRI ORCIS TABLE LAMP
Coup D'etat

BAR CABINET
Coup D'etat

COFFEE TABLE
Loft Thirteen

**ANTIQUE BOOK COVER
TRAY WITH GOLD LEAF**
Brian Gennett

ACCESSORIES
Made Goods

DRAPERIES
Eric Soree Studio

DRAPERY FABRIC
Sandra Jordan

ROMAN SHADES
Hartmann & Forbes

**CUSTOM BADMINTON
WALLPAPER**
De Gournay

**WALLPAPER
INSTALLATION**
Richard Wooldridge

ELECTRICAL
Phil King

PAINTING
Painting by Bredice, Inc

PAINT
Farrow & Ball

CARPET INSTALLATION
Tito's Carpet Works

HEMISPHERE AREA RUG
Tai Ping

WALL-TO-WALL CARPET
Stark



ANDREA SCHUMACHER INTERIORS

LADIES' LOUNGE (FIRST FLOOR)

The ladies' lounge was originally developed as a sanctuary for women apart from the main dining area to powder their noses, sip a cosmopolitan, and guiltlessly gossip before dinner—free of judgment and testosterone. Women are celebrated for their creativity, soft touch and exquisite taste; this room exudes all of the above.

We've taken this age-old concept of the ladies' lounge, which is the epitome of femininity and elegance, and put a modern yet sophisticated party dress on it. Bamboo wallcovering with a twist brings the exquisite colors of the Greystone Mansion gardens inside. With hues of magenta, mandarin and dulcet crème, this retreat will make every lady feel like a real woman.

Andrea Schumacher established her company in 1999 after graduating from Colorado State University with a bachelor's degree in interior design. She put down roots as an apprentice designer on the set of 'Days of Our Lives' and Columbia Pictures in Los Angeles and has since flourished in the Denver area specializing in residential and commercial design. Andrea's fearless and fresh perspective with a signature charm and undeniable sense of humor make for exquisite projects and enthusiastic clients.

ROOM SOURCES

VINTAGE ASIAN CABINET
Custom Design & Fabrication
by Rooster Socks

FABRIC
Duralee

**GREEK FRET TRIM
ON DRAPERY**
Samuel & Sons

DRAPERY HARDWARE
Ona Drapery Hardware

WALLPAPER
Paul Montgomery

CEILING PAPER
Paul Montgomery

RUG
Samad Rugs

ASIAN SCREENS
Paul Montgomery Wallpaper
Installed by Steve Rasmussen

SOFA
Custom Design and Upholstery
by Rooster Socks

VANITY STOOLS
Made Goods

VANITY TABLE
Made Goods

MIRROR
Made Goods

COFFEE TABLE
Mario Grimaldi available
through Egg & Dart

VINTAGE SNAKE SCONCES
Chairish

PAINT
Farrow & Ball

UPHOLSTERED DOORS
Custom Design & Fabrication
by Rooster Socks

DOOR HARDWARE
Baldwin Hardware

CHANDELIER
Niermann Weeks

ACCESSORIES
Egg & Dart

**ART CURATED BY
JOHN WOLF**
"Christy" by Alex Katz



MARK D. SIKES INTERIORS

THE GARDEN HALLS (FIRST FLOOR)

The grand halls of Greystone are transformed into a garden conservatory that feels both refined and fresh while paying homage to the Greystone Mansion and its history in Beverly Hills. The halls are set to a backdrop of treillage, beautiful hand-painted birds, flowers and trees to create an indoor-outdoor atmosphere. A mix of green and blue fabrics mimics scenes of the well-known Greystone gardens and California blue skies. The juxtaposition of gilt, crystal, wicker and plaster brings an air of whimsy and casual elegance.

Mark D. Sikes is a California designer working on projects throughout California, New York and the South. He is known for creating beautiful and timeless interiors that embody the indoor-outdoor California lifestyle. Mark has a talent for mixing American and European, traditional and modern and new and old sensibilities. He has a book due next year and is currently working on numerous product collections.

Mark is also the founder and editor of the well-known lifestyle blog Mark D. Sikes: Chic People, Glamorous Places, and Stylish Things.

ROOM SOURCES

ART

Lindsay Cowles
Gracie Studio, Inc

FABRIC

C&C Milano
Claremont Furnishing
Cowtan & Tout
Lelievre
Pierre Frey
Raoul Textiles
Rogers & Goffigon Ltd.
Samuel & Sons
Scalamandre
Soane Britain

FURNITURE

Dennis & Leen
George Smith
Hollywood at Home
Jasper
J.F. Chen
Soane Britain
Mecox

HARDWARE

Baldwin Hardware

LIGHTING

The Urban Electric Co.
Vaughan Designs, Inc.
Mecox
Jasper

MIRRORS

Therien & Co.

PAINT

Farrow & Ball

RUG

Merida Studio

WALLCOVERING

F. Schumacher & Co

Travail Magnifique!

Congratulations to the 23 very special designers and groups
who have so exquisitely transformed Greystone Mansion
for this year's Maison de Luxe Design Show House.

LE MERVETTY



— *French Pastries* —

a Sweet Taste of Paris in Beverly Hills

319 NORTH CANON DRIVE, BEVERLY HILLS, CA 90210 | 310 . 804 . 9409

WWW.LEMERVETTY.COM



SARA STORY DESIGN

HOMAGE TO THE SQUARE (FIRST FLOOR)

The vision for this installation of the Greystone Mansion living room was inspired by Josef Albers' color theory and his varied use of form in the compositions from his "Homage to the Square" series. Understanding the rules guiding one's visual experience is of great interest to Sara Story, specifically how the interaction of forms and colors affects one's perception visually within a space. The juxtaposition of color and forms in this space is motivated by Albers' use of color palettes and their interplay with forms. Building a rectangular form to fit within the space plays with the tension and spatial configurations.

Sara Story has forged a reputation for an ineffable style inspired by her extensive travels and love of contemporary art and fashion. Sara wields a keen eye to exact her aesthetic vision: crisp, elegant and comfortable gestures that thoughtfully balance multiple elements of good design for an everyday polished life.

ROOM SOURCES

CHANDELIER

Natalie Pasqua
Gray Gallery

ARMCHAIRS

Steve Chase
Gray Gallery

COFFEE TABLE

Peter Lane
Gray Gallery

SIDEBBOARD

Peter Lane
Gray Gallery

POOF

Dana Barnes
Ralph Pucci

STOOLS

Hun-Chung Lee
R & Company

DINING TABLE

David Wiseman
R & Company

COFFEE TABLE

Aurelien Gallet

SETTEE

Sara Story Design
& Furniture Masters

SETTEE FABRIC

Jim Thompson
Romo
SBI Fine Fabric Finishing

DAYBED

Jacques Adnet
On Private Loan

LADDER BACK CHAIR

Paul McCobb
Modern Artifacts

COCKTAIL TABLE

Khouri Guzman Bunce
Liningr

OCCASIONAL TABLE

Khouri Guzman Bunce
Liningr

RUG

Shiir Rugs

ARMCHAIR

William T. Georgis
Maison Gerard

SIDE TABLE

Aurelien Gallet
Maison Gerard

CONSOLE

Achille Salvagni Tango
Maison Gerard

SOFA

Dune

ROCKER CHAIR

Blackman Cruz

LAMP

Blackman Cruz

TABLE

Blackman Cruz

SIDE CHAIR

Blackman Cruz

PAIR OF LAMPS

Adesso

HEXAGON SCONCE

Roll & Hill

ACRYLIC PAINTING

Al Held
Cheim & Read

OIL ON LINEN

Ron Gorchov
Cheim & Read

ACRYLIC PAINTING

Juan Usle
Cheim & Read

OIL ON LINEN

Louise Fishman
Cheim & Read

PAINTING

Joseph Albers
On Private Loan

PAIR OF SCONCES

Max Ingrand for Fontana
Arte
IMC Gallery

CUBE

Rick Holtz Inc.
Gemeiner Cabinets
Unique Colours

PILLOWS

Furniture Masters
Kyle Bunting

ACCESSORIES

Lladró

ACCESSORIES

Made Goods

WALL PAINT

Farrow & Ball
Unique Colours

WINDOW TREATMENTS

Soroe Studios

WINDOW HARDWARE

Morgik

WINDOW TREATMENT

FABRIC
Holland & Sherry

MOVING & INSTALLATION

Air Sea Packing
Aequitas Packing
Mike Hernandez

ARTFUL DESIGN.
CALMING COMFORT OUTDOORS.



DAVID FRANK
DESIGN



Flowers in Beverly Hills





BENJAMIN VANDIVER INTERIORS + LIFESTYLE

ROOM SOURCES

SETTEES

Sabin

CENTER TABLE

Sabin

WALLPAPER

Zak+Fox

WALLPAPER INSTALLATION

Thomas Gil

SKIRTED TABLE

Sabin, Zak+Fox

LIGHT FIXTURE

Bourgeois Boheme

ART

Mary Little

PAINT

Farrow & Ball

SCONCES

Circa Lighting

TABLE LAMPS

Nickey Kehoe

ACCESSORIES

Nickey Kehoe

SAUVAGE LOUNGE (SECOND FLOOR)

I approached the grand hall with a sense of paying homage to Billy Baldwin—my design hero. After nearly deciding to use the classic “Arbre de Matisse” from China Seas (one of Billy’s favorites), my friend Zak Profera came out with Sauvage, a new, also Matisse-inspired fabric, and I realized it was meant to be. After upholstering the walls and sofas in the same fabric, my obvious choice for an accent was blush—classic Beverly Hills resurrected in 2015.

Headquartered in the dramatically re-emerging cultural mecca of Nashville, Benjamin Vandiver founded a full-service interior design and lifestyle brand in 2012. Known for building candid and deep relationships with clients, Mr. Vandiver is also garnering a reputation as a refined aesthete, with his finger firmly on the collective pulse. Harper’s Bazaar, Garden & Gun and Domaine Home have all given their nod of approval along with Vogue magazine and Architectural Digest who named Vandiver “One to Watch”.

Since its inception in 2012, the firm has accepted and completed nearly 40 projects, with over a dozen jobs currently under way in Nashville, New York, Los Angeles and most recently, Dubai. His natural, aesthetically rich style works seamlessly with the individuals he works with—a dazzling roster of clients ranging from provincial bigwigs to internationally renowned icons like heavyweight Wladimir Klitschko and fiancée Hayden Panettiere, actress Connie Britton along with Kings of Leon co-founder and drummer Nathan Followill.

BVIL’s aesthetic deliberately cannot be categorized as one specific expression. He instead relies on the classic tenets of luxury and quality combined with exceptional taste that can only come from experience and a finely honed instinct.



BETH WEBB BETH WEBB INTERIORS

MRS. DOHENY'S BEDROOM, DRESSING ROOM & BATH (SECOND FLOOR)

The minute I walked into the Greystone Mansion I felt as if I'd been in this house for a lifetime. A huge déjà vu sensation overwhelmed me, perhaps, because for me the 1920s remain a benchmark for all that is good and true in both interior design and architecture in America. I've been drawn to iconic properties from the 20s the whole of my aesthetic life. I really wanted Mrs. Doheny's bedroom to be a quiet, elegant refuge with sumptuous furnishings, luxurious fabrics and wallcoverings accentuating, not detracting from the exquisite interior architecture of the room.

Beth Webb has a penchant for great art, beautiful proportions and comfortable, yet luxurious touches. Beth believes that proper scale and a sense of timelessness are the foundation of any successful interior—whether it's traditional, eclectic or contemporary. Her guiding philosophy on interior design lies in her core belief that any space created for a client should be respectful of their lifestyle and their passions. Hence, listening is of the utmost importance in order to craft a home that embodies a client's true character and personality. Based in Atlanta, Georgia, Beth Webb's projects include homes throughout the southeast, as well as residences in Los Angeles, Florida, Connecticut, Michigan and Costa Rica.

ROOM SOURCES

ELLINGTON WING CHAIR

Dessin Fournir through
Ainsworth-Noah

ELLINGTON WING CHAIR FABRIC

Hodsoll McKenzie through
Ainsworth-Noah

PERTH WRITING TABLE

Dessin Fournir through
Ainsworth-Noah

EVERETT BED

Dessin Fournir through
Ainsworth-Noah

BED HANGINGS

Willard Pitt

BED HANGING FABRIC

Hodsoll McKenzie and Zimmer Rohde
through Ainsworth-Noah

BED LINENS

Leontine Linens

TOWELING

Leontine Linens

BEDDING INSERTS

Downtown Company through
CMA Home

HANDLEY CHEST

Dessin Fournir through
Ainsworth-Noah

MASSAR SIDE TABLE

Dessin Fournir through
Ainsworth-Noah

LAMBRECHT SOFA

Dessin Fournir through
Ainsworth-Noah

FABRIC FOR LAMBRECHT SOFA

Hodsoll McKenzie through
Ainsworth-Noah

COVENTRY BERGERE CHAIR

Dessin Fournir through
Ainsworth-Noah

FABRIC FOR COVENTRY BERGERE CHAIR

Hodsoll McKenzie through
Ainsworth-Noah

HUXMAN SIDE TABLE

Dessin Fournir through
Ainsworth-Noah

CHINESE LOW TABLE

Dessin Fournir through
Ainsworth-Noah

ROOM SOURCES (continued)

CANTERBURY SIDE TABLE

Dessin Fournir through
Ainsworth-Noah

DECORATIVE PILLOWS

Terry Greenfield

FABRIC FOR DECORATIVE PILLOWS

Hodsoll Mckenzie through Ainsworth-Noah

DRAPERY HARDWARE

Fritsch Hardware through Ainsworth-Noah

WALLCOVERING

de Gournay through Ainsworth-Noah

RUGS

Kyle Bunting

DOUBLE GOURD LAMPS

Christopher Spitzmiller

CREAM LAMP WITH STUDS

Christopher Spitzmiller

FAUX BOIS CACHE POT

Christopher Spitzmiller

DOOR HARDWARE

Baldwin

MATTRESS AND BOXSPRING

Custom Comfort Mattress

PAINT

Farrow & Ball

BRASS MID CENTURY TABLE ATTRIBUTED TO PAUL MCCOBB, CA 1950'S BAHAI MARBLE

Parc Monceau Antiques

FRENCH BAROQUE MARBLE MASK

Therien Antiques

LOUIS XV GILTWOOD MIRROR

Therien Antiques

ITALIAN ROCOCO GILTWOOD ETAGERE

Therien Antiques

COCTEAU PLASTER WALL SCONCE

Therien Antiques

PAIR FRENCH NEOCLASSICAL MARBLE BRACKETS

Therien Antiques

19TH C. ITALIAN SILVER-GILT DRESSING TABLE MIRROR

Parc Monceau Antiques

19TH C. GILT BRONZE LION MASKS ON MARBLE FRAGMENTS

Parc Monceau Antiques

20TH C. HORN AND BRASS MAGNIFYING GLASS

Parc Monceau Antiques

MID C. MARBLE COCKATOO

Parc Monceau Antiques

19TH C. ENGLISH REGENCY PENWORK WITH NEOCLASSICAL MOTIF

Parc Monceau Antiques

19TH C. GILT BRONZE ELEMENTS ON CUSTOM LUCITE BASES, FRANCE

Parc Monceau Antiques

19TH C. FRENCH CRYSTAL AND BRONZE FINIALS

Parc Monceau Antiques

19TH C. GLASS NEWEL POST

Parc Monceau Antiques

19TH/20TH C. NEOCLASSICAL MARBLE BOWL

Parc Monceau Antiques

PAIR OF 18TH/19TH C. CONTINENTAL WOODEN FINIALS

Parc Monceau Antiques

NEOCLASSICAL 20TH C. SILVER PLATE LETTER OPENER AND MAGNIFYING GLASS

Parc Monceau Antiques

PAIR OF CHINESE BLANC DE CHINE 19TH/20TH C. CRANES

Parc Monceau Antiques

PAIR OF ART DECO INSPIRED MARBLE LAMPS

Parc Monceau Antiques

REGENCY SILVER/CRYSTAL WRITING BOX, ENGLISH 19TH C

Parc Monceau Antiques

CRYSTAL OBELISK ON C HOLLIS JONES ACRYLIC BASE

Dragonette

CRYSTAL OBELISK

Dragonette

SILVER BOX WITH INITIALS GMG

Dragonette

GLASS DECANTER WITH SILVER PLATE TOP

Dragonette

DRAGONETTE PRIVATE LABEL "PEDRA" THREE CRYSTAL LUCITE BOX

Dragonette

STACKED SQUARES LUCITE DECANTER

Dragonette

SMALL PICASSO PRINT IN GOLD FRAME LA CELESTINE

Dragonette

BRAQUES PRINT PROFILL DE FEMME IN GILDED FRAME

Dragonette

DRAGONETTE PRIVATE LABEL LORETTA CHAIR IN SILK VELVET

Dragonette

PAIR CHINESE PORCELAIN CRACKLE GLAZE VASES WITH FRENCH DORE MOUNTS AS LAMPS, SIGNED GAGNEAU PARIS, 19TH C.

John Nelson Antiques

CHINESE PORCELAIN VASE MOUNTED AS LAMP, 19TH C.

John Nelson Antiques

EMPIRE STYLE CONSOLE TABLE WITH MARBLE TOP

Kristen Buckingham, LLC

VASO ANTICO IN VILLA ALBANI DI ALBASTRO ORIENTE ANTIQUE BY CARLO ANTONINI, SET OF 4

Kristen Buckingham, LLC

PAIR OF MAISON JANSEN NUBIAN LAMPS

Kristen Buckingham, LLC

FRENCH EMPIRE COMMODOE WITH MARBLE TOP

Kristen Buckingham, LLC

ASSORTED LEATHER BOOKS

Lee Stanton Antiques

19TH C. ARCHITECTURAL WATERCOLOR OF LONDON PAINTING

Lee Stanton Antiques

HAND COLORED ILLUSTRATION OF FURNITURE, PRINT

Lee Stanton Antiques

LAMPSHADES

Carl's Custom Lamp and Shades
Edgar Reeves

ELLIOT BERGERE CHAIR

Dessin Fournir through Ainsworth-Noah

FABRIC FOR ELLIOT BERGERE CHAIR

Zimmer Rohde through Ainsworth-Noah

CEILING FIXTURE

The Urban Electric Co.

CARPET

Merida

ROCK CRYSTAL TABLE LAMPS

Dragonette

FAUCET

ROHL

RENDERING

Stephan Alexander

NEOCLASSICAL POLYCHROME ARCHITECTURAL ELEMENTS ON CUSTOM STANDS

Parc Monceau Antiques

DRESSING ROOM & CLOSET DESIGN

L.A. Closet Design

CUSTOM FABRIC DRAWER INSERTS

L.A. Closet Design

CLOTHING & ACCESSORIES

Mito Aviles, Oh Mannequin!

CLOSET HARDWARE & INSTALLATION

George Somers Construction

DRESSING ROOM ACCESSORIES

J.F. Chen

PRIMA ALPACA THROWS

Sandra Jordan Collection

*Everything you need,
Everything you want...*



to make your wedding dreams come true.

CLASSIC PARTY RENTALS
901 W. Hillcrest Blvd. • Inglewood, CA 90301 • 310.202.0011
info@classicpartyrentals.com • www.classicpartyrentals.com

Maison de Luxe

BOWLING ALLEY POWDER ROOM (LOWER LEVEL)

ROOM SOURCES

SINK FIXTURES, TOWEL BAR

ROHL by Michael Berman
through Snyder Diamond

VANITY, WALL CABINET

Kallista through
Snyder Diamond

LIGHTING

Lantern Masters, Inc.

WALLCOVERING

Arte through Egg & Dart

WALL PREPARATION

Safe and Simple

WALLPAPER INSTALLATION

Carolyn Greene,
Carolyn's Professional
Wallpapering

LADIES' LOUNGE BATHROOM (FIRST FLOOR)

ROOM SOURCES

PEDESTAL SINK, FIXTURES, TOILET

ROHL

STOOL

Marcali

WALLCOVERING

Arte through Egg & Dart

LIGHTING

Lantern Masters, Inc.

RUG

Woven Accents

WALLPAPER INSTALLATION

Carolyn Greene,
Carolyn's Professional
Wallpapering

FIRST FLOOR LANDING

ROOM SOURCES

LIGHTING

Lantern Masters, Inc.

"RED POPS" SPECIAL COLLECTION PIANO

Steinway & Sons

THIRD FLOOR HALLWAY

ROOM SOURCES

ART CURATED BY

John Wolf Art Advisory
and Brokerage.

BILLIARD ROOM (LOWER LEVEL)

ROOM SOURCES

DISPLAY AND ACCESSORIES

Lladro

SANDOW®

Brands Powered by Innovation™

We build businesses driven by innovation and design.

SANDOW's diverse portfolio delivers powerful products, services and experiences to a highly selective audience.

Our brands—which span design, luxury, fashion and beauty—include *Interior Design*, *Luxe Interiors + Design*, *NewBeauty* and *Worth* magazines, as well as online beauty matching service BeautyDNA, creative management agency Culture + Commerce, iconic retailer Fred Segal and global materials consultancy Material ConneXion.

DESIGN + LUXURY



Culture + Commerce



Interior Design



Luxe Interiors + Design



Material ConneXion



MediaJet



ThinkLAB



Worth

BEAUTY + FASHION



BeautyDNA



Fred Segal



NewBeauty



TestTube

DESIGNER LECTURE SERIES

SATURDAY, NOVEMBER 7, 2015

ADMISSION: \$39.00
(Includes Show House Tour)

11:00AM AUTHENTIC DESIGN

Moderated by Editor-In-Chief, Pamela Jaccarino

A lively conversation with design industry greats Nina Campbell, Timothy Corrigan, Beth Webb and Mark D. Sikes about enduring design, and the art of elegant, glamorous decorating. Get a glimpse into the inspiration behind their rooms at Greystone and discover how these designers create spaces that are steeped in history, yet still feel lively and fresh.

NOON – 2:00PM BOOK SIGNINGS BY:

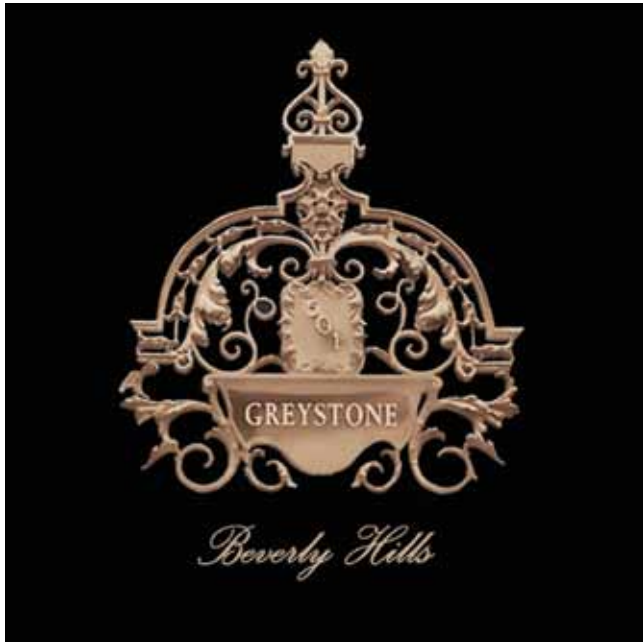
Nina Campbell, *Nina Campbell Interiors*
Timothy Corrigan, *An Invitation to Château du Grand-Lucé*

2:00PM ROOMS WITH OOMPH!

Moderated by LA Features Editor, Lisa Dewart

Join interior designers Mat Sanders and Amy Meier for a fun and engaging discussion about injecting oomph and personality into any space. Find out how each of these designers infused their room at Greystone with interest and exuberance.

HISTORY OF GREYSTONE



Greystone Mansion, and the surrounding grounds it shares its magnificent beauty with, are rich in California history. Edward Laurence Doheny, the original proprietor of the Greystone land, was born in 1856 in the small Midwestern town of Fond du Lac, Wisconsin. By the time he was a young teen, Doheny's adventuresome spirit and love of the wilderness led him to prospecting for gold and soon thereafter, oil. In 1892, Doheny and his friend Charles A. Canfield were the first to strike oil in Los Angeles. They later discovered large oil deposits in Mexico which, combined with their Los Angeles holdings, made them the largest producers of oil in the world at that time.

Edward Doheny and his wife Carrie Louella Wilkins had two children. Their first, a daughter Eileen, passed away when she was just seven years old. On November 6, 1893, their only son, Edward "Ned" Laurence Doheny, Jr., was born and grew up as heir to one of the world's great financial empires. Ned went on to marry Lucy Smith of Pasadena and in 1926 Edward Laurence Doheny Sr. gave his son as a wedding gift a premium parcel of land consisting of 12.58 acres with sweeping citywide views.

Construction of the palatial manor home began February 15, 1927 and although Ned, his wife Lucy, and their five children moved into the residence in September 1928, the entire estate took three years to complete at a cost of \$3,166,578.12, an almost unimaginable sum in real estate at the time. The Mansion alone cost \$1,238,378.76. The extraordinary result became known as Greystone for its abundant use of stone construction and its rather somber gray appearance. In addition to the Mansion, stables and kennels, tennis courts, a fire station, gatehouse, swimming pool and pavilion, a greenhouse, a lake, babbling brooks and cascading waterfalls were originally located on the grounds.

But on the night of February 16, 1929, only five months after the family had moved in, Ned Doheny was found shot to death inside the home at the age of 36, the victim of an apparent murder-suicide perpetrated by his longtime personal friend and aide Hugh Plunket.

Lucy continued living at Greystone until 1955, after which she and her second husband Leigh M. Battson sold the majority of the original land to the Paul Trousdale Corporation, developers of Beverly Hills' prestigious "Trousdale Estate" homes. The following year Lucy and her husband sold for approximately \$1.5 million the remaining 18.3 acre parcel, including Greystone Mansion, to Henry Crown of Chicago-based Park Grey Corporation. Mr. Crown, however, never formally occupied the site but instead leased it out as a popular filming location, a legacy Greystone still maintains today. The City of Beverly Hills purchased the property from Mr. Crown in 1965 for approximately \$1.3 million with plans to install a 19-million gallon water tank on the property as its hilltop site provided tremendous natural water pressure. The site continues to serve as the City of Beverly Hills' largest reservoir.

On September 16, 1971, the entire 18.3 acre site, including its centerpiece Greystone Mansion, was formally dedicated as a public park by the City of Beverly Hills. Five years later, on April 23, 1976, Greystone Estate was officially recognized as a historic landmark and was entered into the Registry of Historic Places.

Greystone Mansion was designed by renowned Southern California architect Gordon B. Kaufmann and was constructed by the P.J. Walker Company. The landscape architect was Paul G. Thiene who used a potpourri of Gothic and neoclassic styles.

The structure of Greystone Mansion was built of steel reinforced concrete, faced with Indiana limestone and is roofed of Welsh slate. Upon entering the Mansion, the hand railings and arch-framed stairway typify both the opulence and craftsmanship of the era and of the entire Greystone property. All of the oak banisters, balustrades and rafters were hand carved, while each of the seven chimneys was designed and crafted by a different artist. The floors of the grand hall showcased black and white inlaid marble and an elaborate living room held a balcony where musicians often performed on special occasions. The kitchen featured a pantry built to secure a large adjoining wall safe that was used to store the family's silver and gold services. The Mansion was built with a servant's quarters which occupied two floors of the east wing and accommodated a live-in staff of fifteen.

There are fifty-five livable rooms within the 46,054 square feet of living space in the Mansion. While the Mansion's bedrooms were spread throughout the second floor, the master bedroom suite was located in the west wing and featured an accompanying sitting room, two baths, a dressing room and a massage room. All the rooms with southern exposure offered a panoramic view of the Los Angeles Basin, from downtown to the beaches of Santa Monica Bay.



In the north wing where the two oldest boy's bedrooms were located, a circular staircase led into an adjacent recreation wing that contained a movie theater room, an original Brunswick bowling alley, billiard room and a hidden bar.

Today one may recognize certain scenes from the movies as a number of well known films have been shot here at Greystone using the stately home and its garden-like grounds as a backdrop. The grandeur of the setting also makes it a popular venue for weddings and lavish ceremonies attended by many of Hollywood's elite.

Greystone Estate is located at 501 Doheny Road, Beverly Hills, California 90210.





The Entertainer

Lulu Powers

9819 parties 11.5 million love Lulu 1 billion ideas

FOLLOW



DISCOVER ICELAND'S GREATEST NATURAL RESOURCE



Natural Spring Water from Iceland



100% Sustainable Spring



Naturally Alkaline



Exceptional Purity



100% Carbon Neutral



www.icelandicglacial.com

PLEASE...

... JOIN THE FRIENDS OF GREYSTONE IN OUR MISSION TO RESTORE DOHENY GREYSTONE ESTATE BACK TO ITS MAGNIFICENT DAYS OF GLORY.

... CONSIDER SUPPORTING A SPECIFIC PLANNED RESTORATION PROJECT.

... BECOME A MAJOR DONOR AND BECOME A PART OF OUR DONOR WALL.

... BECOME AN IMPORTANT PART OF DOHENY GREYSTONE ESTATE'S HISTORY.



THE MANSION'S DOOR KNOBS

Phase 1/2015 The Mansion has over one hundred doors. Most of the historic doorknobs have “gone missing” over the years. Some doors have no knob. Others have mismatched replacement hardware and rosettes. The Friends have counted and inventoried every door and doorknob in the Mansion. At least 160 knobs in three styles will be needed to put all doors in working order. Introduced to Greystone by Luxe Interior + Design Magazine, Baldwin Hardware has offered to donate similar style knobs, rosettes and associated hardware from their catalogue for the entire Mansion with a donated retail value of approximately \$20,000.

Phase 2/2016 The Friends of Greystone are seeking a donor to sponsor the hardware installation by a qualified locksmith/restoration specialist. Installation may include the refurbishment or rebuilding of many of the original mortise lock boxes. Project cost with recognition is approximately \$25,000-\$30,000.



THE LIVING ROOM AND MINSTREL GALLERY

Phase 1/2015 Completed by Renaissance Design Studio, Alan & Kim Weiner have recreated and hand carved a pair of finials to replace two that have been missing from the Minstrel Gallery for many years. Using historic photos from 1928, as well as close-up photos from the 1965 movie “The Loved One”, Renaissance has been able to replicate the original finials. In addition, Renaissance has carved and replaced other missing millwork and three sets of steps in the Minstrel Gallery to their original dimensions. Renaissance has generously donated a substantial portion of their time and costs toward this project with an estimated donation value of over \$12,000.

Phase 2/2016 Jimenez Custom Painting, Inc. will generously be donating all faux finishing to match the Minstrel Gallery woodwork. The floor and steps in this area will also be refinished.

Phase 3/2016 This phase would correct alterations made to the Minstrel Gallery's interior doorways by the American Film Institute in the 1980's when they converted the space to a projection room. Silverlake Conservation would make a mold from an original remaining corbel and create and replace two which are missing. Project cost with recognition is unknown at this time.



THE LIBRARY / MUSEUM

Phase 1/2015 The Friends of Greystone Board of Directors are extremely grateful to McCoy Construction for their generous donation of time and expertise in preparing a complete proposal to restore this room to its original 1928 design. Millworks by Design has also donated substantial time to this planned restoration and transformation of the historic Library into a future museum. The museum will showcase numerous Doheny Family treasures donated by multiple generations of family members.

Phase 2/2016 This room was totally stripped of its woodwork and fireplace by Lucy Doheny Battson when she moved from Greystone in 1955. Since there is nothing original existing in the room, with the exception of the windows, doors and floor, the restoration will be extensive. It will include replication of the original vaulted, stamped ceiling and floor-to-ceiling wood paneling copied from archival 1928 photos. Approximate cost is \$342,750.

Phase 3/2016 A special display is planned for artifacts generously gifted by Doheny family descendants. Most of this exquisite collection, including fine crystal, porcelain, linens, photos, books and personal effects, were once used at Greystone. Shelves, glass doors, hardware and lighting will be built into display cabinets where the library shelves were previously located. Approximate cost is \$113,000.



BOYS NORTH WING BATHROOM

Phase 1/2015 Due to a generous anonymous donor, Silverlake Conservation, Amy Green, principal, has been hired by the Friends of Greystone to remove, conserve and reinstall a damaged section of original tiles in the bathroom shower.

Phase 2/2015 Silverlake Conservation will also repair and refurbish all of the tilework in the bathroom including meticulous cleaning of tile and grout, removal and patching of non-historic fixtures. Project cost with recognition is approximately \$6,950.

Phase 3/2016 Re-chroming of all historic fixtures and replacement of any missing fixtures. Project cost is unknown at this time.



THE MOVIE THEATER / SCREENING ROOM

Phase 1/2015 In order to plan the upgrading and restoration of this historic space in the Mansion's Entertainment Wing, the City of Beverly Hills funded an Infrastructure Engineering Study completed by Chief Architect David Kaplan with KC Architects. The ultimate plan is to create a fully functional state-of-the-art screening room as a rental venue and intimate performance space.

Phase 2/2016 The electrical, décor, sound system, digital equipment and naming rights with extensive usage for a donor is available. Project cost with recognition is approximately \$1,500,000.



THE BILLIARD ROOM AND BAR

Restoration involved the north wall which had extensive water damage. Through the generosity of Renaissance Design, the damaged panels have been reproduced in matching knotty pine. Jimenez Custom Painting is completing the faux finishing and preservation of all remaining woodwork. With the original billiard table donated back to its historic location by Onnalee Doheny, the room has been returned to the glamour of 1928.

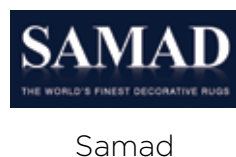
PARTICIPATING SPONSORS



BoardHouse



PARTICIPATING SPONSORS





JANICE BROWNE
V.P., GROUP PUBLISHER
LUXE INTERIORS + DESIGN

It's my pleasure to welcome you to Maison de Luxe at the iconic Doheny Greystone Estate.

Luxe Interiors + Design is proud to present this extraordinary Designer Show House. We commend the talented mix of designers from across the country and beyond, who have brought their creative vision to life by transforming the interiors of this spectacular historic landmark.

I would like to extend a special thank you to our wonderful sponsors and partners,

who have generously supported this project from its inception and made this event possible.

If you'd like to take a piece of Maison de Luxe home with you, visit our Show House sale on violet.com, to be held in December.

A handwritten signature in black ink that reads "Janice". The signature is elegant and cursive, with a large initial "J" and a small dot above the "i".

Fantescia
ESTATE & WINERY



WINES BY HEIDI BARRETT

Crafted in the Napa Valley

Tours and tastings by appointment. 707.968.9229

2920 Spring Mountain Road, St. Helena, CA 94574

Fantescia.com



GREYSTONE
MANSION
Concours d'Elegance

MAY 1, 2016



WWW.GREYSTONECONCOURS.ORG



The City of Beverly Hills and the Friends of Greystone are extremely appreciative and would like to thank everyone that has been instrumental in presenting the 2015 Maison de Luxe Design Show House.

We graciously thank *Luxe Interiors + Design* for selecting Greystone Mansion once again for their 10th Anniversary Celebration. This event would not be possible without the support of the Interior Designers selected by *Luxe Interiors + Design*. They have gone above and beyond to create exquisite designs for you to enjoy as you tour historic Doheny Greystone Mansion.

The event is reliant on volunteers and the members of the Friends of Greystone that supplement the City of Beverly Hills staff for your aesthetic enjoyment and an opportunity to view the Mansion fully dressed. We thank our incredible sponsors and patrons who donate their time, money and products for our guest's pleasure!

Thank you for attending this event as your support is integral to the Friends of Greystone and the City of Beverly Hills' efforts in restoring Doheny Greystone Mansion to its original glory!

CITY OF BEVERLY HILLS

CITY COUNCIL

Julian A. Gold, M.D., Mayor
John A. Mirisch, Vice Mayor
William W. Brien, M.D.
Lili Bosse
Nancy H. Krasne

CITY TREASURER

Eliot Finkel

RECREATION & PARKS COMMISSION

Simone Friedman, Chairperson
Frances Bilak, Vice Chairperson
Susan Gersh
Robert S. Anderson
Howard L. Rosoff

CITY MANAGER

Mahdi Aluzri

COMMUNITY SERVICES DIRECTOR

Steven Zoet

RECREATION SERVICES MANAGER

Brad Meyerowitz

EVENT SUPERVISOR

Cindy Brynan

COMMUNITY SERVICES PUBLICIST

Dana Beesen

PARK RANGER SUPERVISORS

Steve Clark
Daniel Hernandez

FRIENDS OF GREYSTONE PRESIDENT

Susan Rosen

FRIENDS OF GREYSTONE MAISON DE LUXE GALA COMMITTEE

Adrienne Forst
Suzanne Furst
Christina Zhong
Kathy Melamed
Gay Parrish
Kim White Peterson
Susan Rosen
Joy Schneider
Vicky Swartz
Marsha Tauber Salli

FRIENDS OF GREYSTONE MAISON DE LUXE SILENT AUCTION DONORS

Abell Auction Company
Beverly Hills Fire Department
Beverly Hills Jewelers
Beverly Hills Police Department
Bristol Farms - West Hollywood
Burke Williams Spa
Cline Cellars
Cliff Lede Vineyards
Timothy Corrigan, Inc.
Courtney Nanson Creations
Crustacean / House of An
and the An Family
Detail 301
Excalibur Jewelers
Flemings Prime Steak House &
Wine Bar - Beverly Hills
Griffith Observatory
Roberta Haft
Jeffrey Hyland
Il Fornaio Beverly Hills
K Chocolatier by Diane Kron
Lawry's the Prime Rib
L'Hermitage - Beverly Hills
Le Petite Spoon Catering

Macarthur Place Inn & Spa
Malibu Country Mart
Mastro's Steakhouse
melamed belts & accessories
Kathy Melamed
Mitchell Gold + Bob Williams
Montage Hotels & Resorts
Montage Hotel - Beverly Hills
Anita Naiman
Kim White Peterson
Ralph Lauren - Beverly Hills
Ritz Carlton - Lake Tahoe
Royal Accessories, LLC
Scalamandre
Sephora Beverly Drive
Spaghetini & the
Dave Coz Lounge
Studio Christoffe
Sugarfina
Teuscher Chocolates & Café
The Body Pilates
The Farm of Beverly Hills
The Grill on the Alley
The Hess Collection Winery
The Rothner Family
The Swiss Hotel Restaurant
Xi'an - Beverly Hills
Zina Sterling Silver

PROGRAM BOOK PRODUCERS

PUBLISHER

Greenhouse Marketing Group
www.greenhousemg.com

DESIGN & CREATIVE SERVICES

Core Communications
323.935.9213

PRINTER

Design Printing Associates
www.designprintingla.com

TRAMO@HOME

High End Furniture Transport and Logistics

TRAMO@ HOME LOS ANGELES

1725 W ROSECRANS AVE

GARDENA, CA 90249

310.771.0550 FAX

310.469.6050

TRAMO@ HOME NEW YORK

51 HOOK RD, BAYONNE, NJ 07002

201.339.0123 FAX

201.258.3840

FOR MORE DETAILED INFORMATION,
PLEASE VISIT OUR WEBSITE AT:
WWW.TRAMOATHOME.COM



AMERICAN
SOCIETY OF
INTERIOR
DESIGNERS
INDUSTRY PARTNER



★ AMERICA'S ★ ORIGINAL CRAFT VODKA®

WINE ENTHUSIAST RATINGS

SCORE OUT OF 100 POINTS

TITO'S® 95 USA
HANDMADE VODKA PTS

Ketel One® HOLLAND	89 PTS	Belvedere® POLAND	84 PTS
Grey Goose® FRANCE	84 PTS	Absolut® SWEDEN	84 PTS



Tito's



Handmade
VODKA

Crafted in an Old Fashioned Pot Still
by America's Original Microdistillery

AUSTIN ★ TEXAS

DISTILLED & BOTTLED BY FIFTH GENERATION, INC. AUSTIN, TX. 40% ALC/VOL

PHOTOGRAPH BY JEFFREY M. HARRIS FOR TITO'S VODKA

My American Handmade Vodka beats the giant "Imports" every day. That's because it's distilled six times, we use old-fashioned pot stills we built ourselves, and taste test every batch to make sure you get only the best. Try American!

Tito's is made from corn, so it's naturally gluten-free.



Tito



Spirit Journal

"America's first craft
sippin' vodka"

Wall Street Journal

Unanimous Double
Gold Winner!!!

World Spirits Competition

"Smooth, I mean
really smooth!"

CNN

Certified



Gluten-Free

★ **TitosVodka.com** ★
Handcrafted to be savored responsibly.





PRIVATE CHEF
NETWORK

SHOW HOUSE MENU

OPEN DAILY 11AM – 3PM

SANDWICHES:

Thanksgiving turkey sandwich	\$12
Shaved slow roast beef and cheddar sub	\$12
Vegetarian wrap	\$10

SALADS:

Chicken Cobb	\$7
Beet salad	\$7
Mixed green	\$5

SNACKS:

Hummus plate	\$4
Mixed bag of nuts	\$4
Mixed veggie chips	\$5

DESSERTS:

\$3 each

Mini pie
Cookie
Yogurt parfait
Fresh fruit bowl

DRINKS:

Juice and lemonade	\$6 per jar, \$2 for refills
Water	\$2
Soda	\$2
Coffee	\$2

WE APOLOGIZE THERE WILL BE NO FOOD SERVICE IN THE EVENT OF RAIN

100% BLUE AGAVE

ASOMBROSO

Fine Tequilas



ATEQUILA.COM



SAPERE | AUDE

SPARKLING WINE

Maison de Luxe

luxe.
interiors • design



FRIENDS OF
GREYSTONE

#MaisondeLuxe15