

BEVERLY HILLS FIRE DEPARTMENT

COMMUNITY EMERGENCY RESPONSE TEAM ~ C.E.R.T ~

BEVERLY HILLS, June 5, 2021.

Dear CERT volunteers, June is bringing new developments regulated by the CDC, the State of California, Los Angeles County and the City of Beverly Hills. Here are some of the expected updates/changes starting June 15, 2021:

- Capacity limitations and physical distancing requirements will be lifted, with limited exceptions.
- Masking requirements will be addressed in the State's separate guidance.
- Los Angeles County travel advisory will align with the State & CDC.
- The State will continue to issue separate guidance for: youth, healthcare and high-risk congregate settings.

To stay updated on the latest COVID-19 news, visit beverlyhills.org/coronavirus or call the City's COVID-19 Hotline Monday-Friday from 9 a.m. – 6 p.m. at 310-550-4680.

This week information, as follows:

- COVID-19 updates
- JUST IN CASE BH Zone 8 upcoming Zoom meeting on June 16, 2021
- Disaster Preparedness
- CERT Callout Team registrations

If you have questions, comments or concerns about the CERT program, please contact us at cert@beverlyhills.org

Neighbors helping neighbors.




VACCINATE LA COUNTY

WHAT TO EXPECT ON JUNE 15TH

SWIPE

For more information, visit: VaccinateLACounty.com



VACCINATE LA COUNTY



Capacity limitations and physical distancing requirements will be lifted, with limited exceptions.



Masking requirements will be addressed in the State's separate guidance.

SWIPE

For more information, visit: VaccinateLACounty.com



VACCINATE LA COUNTY

Limited Exceptions for Mega Events

+5,000 people indoors | +10,000 people outdoors.

Indoor mega-events All attendees must verify full vaccination status or a negative COVID-19 test 72 hours prior to entry.

Outdoor mega-events verifying full vaccination status or negative COVID-19 test is recommended but not required, and attendees who do not verify their status will need to wear masks.

SWIPE


For more information, visit: VaccinateLACounty.com



VACCINATE LA COUNTY




LA County's travel advisory will align with the State & CDC.



The State will continue to issue separate guidance for: youth, healthcare, and high-risk congregate settings.

SWIPE

For more information, visit: VaccinateLACounty.com



For more information, please visit: VaccinateLACounty.com

Also stay in touch with your medical care provider for the latest information regarding vaccination appointments.

Can those who received a COVID-19 vaccine give blood?



COVID-19 VACCINE

KNOW YOUR COVID-19 VACCINES

ALL have been clinically tested to be very safe and effective in trials at preventing serious illness and death from COVID-19.

VACCINE	NUMBER OF DOSES	DAYS BETWEEN DOSES	TIME UNTIL YOU ARE FULLY VACCINATED	WHO CAN TAKE THIS VACCINE?
Johnson & Johnson	1	N/A	2 weeks	Ages 18+
Pfizer	2	21	5 weeks	Ages 12+
Moderna	2	28	6 weeks	Ages 18+

For more information, visit: [VaccinateLACounty.com](https://www.vaccinateLACounty.com)



Also stay in touch with your medical care provider for the latest information regarding vaccination appointments.

JUST IN CASE BH

*"JUST IN CASE, BH
Businesses, and all
by seamlessly assisting
during and after
disaster preparedness,
leadership, and*

*As a CERT member we
participate and also to
about this opportunity*



*brings Residents,
City services together
each other before,
emergencies through
organizational
communication."*

*encourage you to
let everyone know
for a better community.*

Watch Fire Chief Greg Barton's message <https://vimeo.com/510836137>

Sign up by visiting:

<http://www.beverlyhills.org/departments/firedepartment/justincasebh/web.jsp>

DO YOU KNOW YOUR JUST IN CASE BH ZONE? One of the major aspects of JUST IN CASE BH is the division of the City into geographic zones. Each zone is designed to support itself during times of emergency or disaster. Get to know your zone area: https://gis.beverlyhills.org/VBH/MyJICBHZone_FinderApp/



Also stay in touch with your medical care provider for the latest information regarding vaccination appointments.

The Just In Case BH program is offering emergency kits through [Beverly Hills CPR](#)

Automated External Defibrillator, AED can be purchased for any home or facility. Stop The Bleed kits are available for purchase, as well CPR books.

ZONE 8 UPDATE:

Greetings Zone 8,

We held a very successful Zoom meeting with residents from Zone 9. Participants in the meeting heard from our Fire Chief, Greg Barton, and Police Chief, Dominick Rivetti. The Chiefs shared information about this new, innovative program and answered questions regarding the history of the program and why it is so important to have as many residents and business owners participate. On April 17th, in advance of the meeting, JUST IN CASE BH committee members and volunteers walked Zone 9 and personally delivered flyers and interacted with Zone 9 residents. We had a wonderful turn out the included members of TEEN [CERT](#) and newly assigned [Block Captains](#). We could not have done it without them.

You are receiving this email because you are in Zone 8(map attached)! As with all future zones, we will walk your Zone to distribute flyers and greet residents on Saturday, 06/05/21 and Sunday 06/06/21. Your Zone 8 Zoom meeting is on 06/16/21. We continue to recruit for various leadership positions including Zone Coordinators, Neighborhood Coordinators, and Block Captains. If you are interested in filling one of these positions, or if you would like more information, please send an email to Fire Inspector Alvin Cuna @ JUSTINCASEBH@beverlyhills.org or contact Vera Markowitz @ 310-890-8403. You can also visit our website www.justincasebh.org

Sincerely,

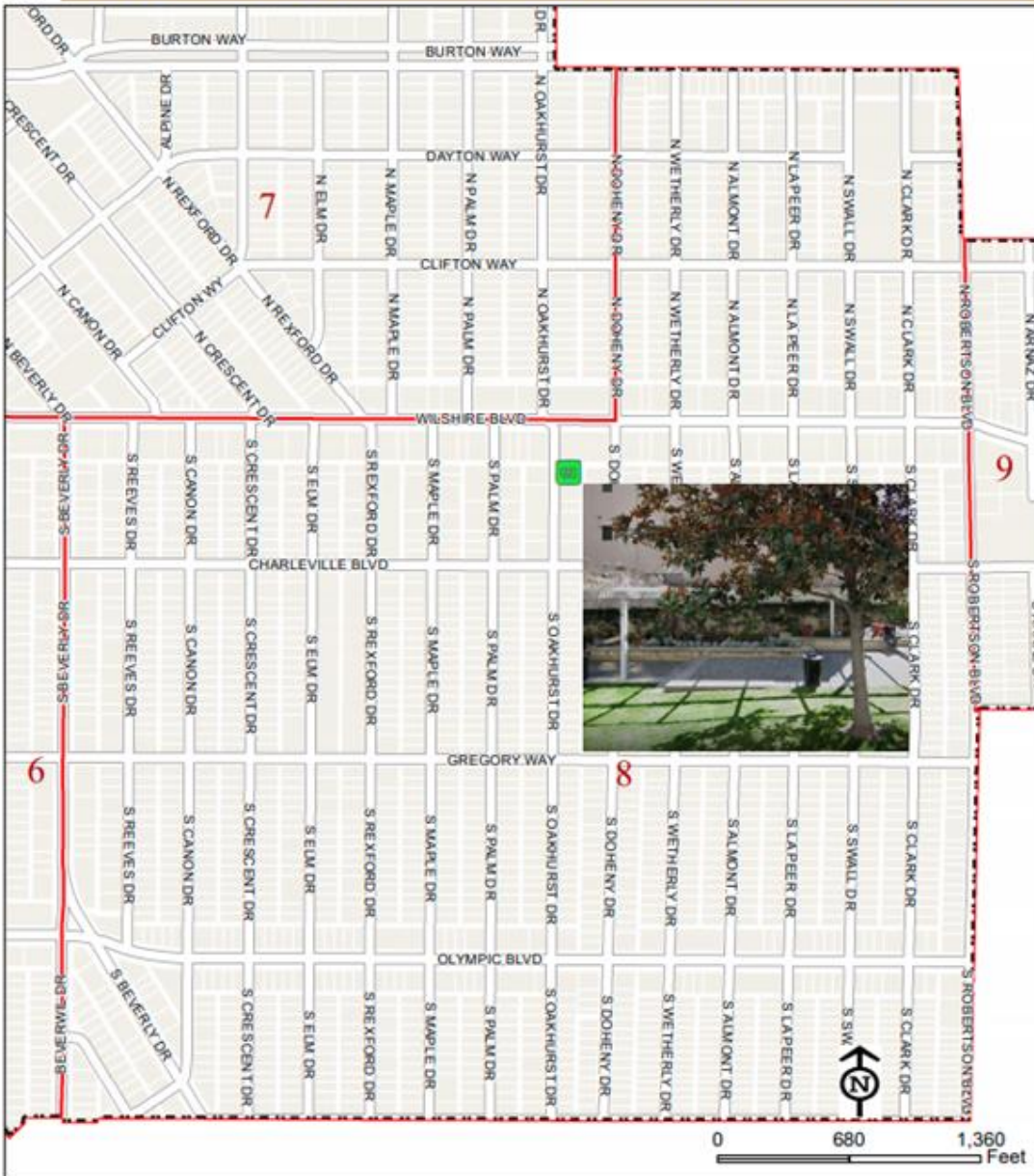
Gregory W. Barton

Fire Chief

Also stay in touch with your medical care provider for the latest information regarding vaccination appointments.



JUST IN CASE BH Zone 8 - City of Beverly Hills, California



-  Meeting Area
-  Just In Case BH Zone Boundary
-  City Boundary

Meeting Area of Zone 8:
Oakhurst Mini Park
120 S Oakhurst Dr

This map is for informational purposes. The City of Beverly Hills makes no representations or warranties of any kind with respect to the accuracy of the information or data furnished herein.
 Map produced by: City of Beverly Hills - IT - GIS
 455 N. Rexford Dr. Beverly Hills, CA 90210
 March 2021

Also stay in touch with your medical care provider for the latest information regarding vaccination appointments.

DISASTER PREPAREDNESS



Prepare Your Pets for Disasters

Your pets are an important member of your family, so they need to be included in your family's emergency plan. To prepare for the unexpected follow these tips with your pets in mind:

1. Make a plan.
2. Build an emergency kit.
3. Stay informed.

Make a Plan

If you have a plan in place for you and your pets, you will likely encounter less difficulty, stress and worry when you need to make a decision during an emergency. If local officials ask you to evacuate, that means your pet should evacuate too. If you leave your pets behind, they may end up lost, injured or worse.

Things to include in your plan:

Also stay in touch with your medical care provider for the latest information regarding vaccination appointments.

- **Have an evacuation plan for your pet.** Many public shelters and hotels do not allow pets inside. Know a safe place where you can take your pets before disasters and emergencies happen.
- **Develop a buddy system.** Plan with neighbors, friends or relatives to make sure that someone is available to care for or evacuate your pets if you are unable to do so.
- **Have your pet microchipped.** Make sure to keep your address and phone number up-to-date and include contact information for an emergency contact outside of your immediate area.
- **Contact your local emergency management office, animal shelter or animal control office** to get additional advice and information if you're unsure how to care for your pet in case of an emergency.

Build a Kit for Your Pet

Just as you do with your family's emergency supply kit, think first about the basics for survival, such as food and water. Have two kits, one larger kit if you are sheltering in place and one lightweight version for if you need to evacuate. Review your kits regularly to ensure that their contents, especially foods and medicines, are fresh.

Here are some items you may want to include in an emergency kit for your pet:



- **Food.** Keep several days' supply of food in an airtight, waterproof container.
- **Water.** Store a water bowl and several days' supply of water.

Also stay in touch with your medical care provider for the latest information regarding vaccination appointments.

- **Medicine.** Keep an extra supply of the medicine your pet takes on a regular basis in a waterproof container.
- **First aid kit.** Talk to your veterinarian about what is most appropriate for your pet's emergency medical needs.
- **Collar with ID tag and a harness or leash.** Include a backup leash, collar and ID tag. Have copies of your pet's registration information and other relevant documents in a waterproof container and available electronically.
- **Traveling bag, crate or sturdy carrier,** ideally one for each pet.
- **Grooming items.** Pet shampoo, conditioner and other items, in case your pet needs some cleaning up.
- **Sanitation needs.** Include pet litter and litter box (if appropriate), newspapers, paper towels, plastic trash bags and household chlorine bleach to provide for your pet's sanitation needs.
- **A picture of you and your pet together.** If you become separated from your pet during an emergency, a picture of you and your pet together will help you document ownership and allow others to assist you in identifying your pet.
- **Familiar items.** Put favorite toys, treats or bedding in your kit. Familiar items can help reduce stress for your pet.

Tips for Large Animals

If you have pets such as horses, goats or pigs on your property, be sure to prepare before a disaster.

In addition to the tips above:

- Ensure all animals have some form of identification.
- Evacuate animals earlier, whenever possible. Map out primary and secondary routes in advance.
- Make available vehicles and trailers needed for transporting and supporting each type of animal. Also make available experienced handlers and drivers.
- Ensure destinations have food, water, veterinary care and handling equipment.
- If evacuation is not possible, animal owners must decide whether to move large animals to a barn or turn them loose outside.

Also stay in touch with your medical care provider for the latest information regarding vaccination appointments.

Stay Informed

Being prepared and staying informed of current conditions. Here are some ways you can stay informed:

- **Pay attention** to [wireless emergency alerts](#) for local alerts and warnings sent by state and local public safety officials.
- **Listen to local officials** when told to evacuate or shelter in place.
- [Download the FEMA app](#) and get weather alerts from the National Weather Service, for up to five different locations anywhere in the United States.
- **Always bring pets indoors** at the first sign or warning of a storm or disaster.

Also stay in touch with your medical care provider for the latest information regarding vaccination appointments.

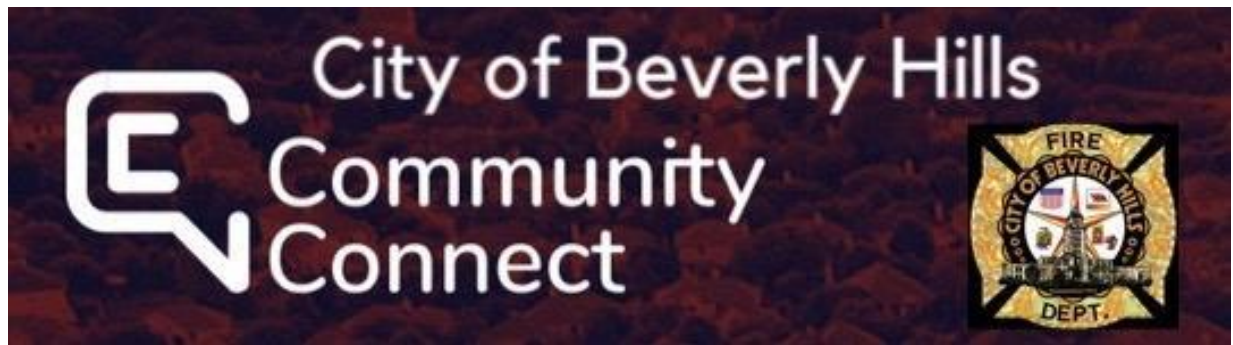
CERT CALLOUT TEAM

HIDRATION UNIT, RED FLAG PATROL, DOWNED WIRE WATCH

The BHFD-CERT is actively looking for volunteers to join the **Callout Team** to have an active participation within the training acquired. Please sign up at cert@beverlyhills.org subject line: **COT**

Follow and Share our BHFD and Just in Case BH Social Media sites:

Facebook [@BeverlyHillsFire](#) Instagram [@beverlyhillsgfd](#) Twitter [@CityofBHFire](#)
Facebook [@JustincaseBH](#)



Beverly Hills Community Connect Find out more about Los Angeles County Community Connect, brought to you by the Beverly Hills Fire Department . Together, Building a Safer Community Through Prevention, Preparedness & Response.

Respectfully,

Gabriel Mier
C.E.R.T. Coordinator
Community Risk Reduction
City of Beverly Hills
Fire Department
445 N. Rexford Dr.
Beverly Hills, CA. 90210
C: 310-612-5762

Also stay in touch with your medical care provider for the latest information regarding vaccination appointments.