



Environmental
Intelligence, LLC

January 4, 2023

Ms. Christine Chung
Associate Project Manager
Public Works Department
City of Beverly Hills
345 Foothill Road
Beverly Hills, CA 90210

Mr. Joseph DeMello
Director, Construction Manager
Westside Purple Line Extension Section 1
Los Angeles County Metropolitan Transportation Authority
One Gateway Plaza, 17th Floor
Los Angeles, CA 90012

Subject: Segment 1 - Purple Line Extension Project ICM Weekly Report
December 25, 2022 – December 31, 2022

Dear Ms. Chung and Mr. DeMello,

Environmental Intelligence, LLC (EI) has been retained by the City of Beverly Hills (COBH) and the Los Angeles County Metropolitan Transportation Authority (Metro) to serve as the independent compliance monitor (ICM) during construction of the Purple Line Extension Project. Monitoring is required to ensure construction is in compliance with the MOA for Contract C1045 of the Purple Line Extension Project – Segment 1 – Between the City of Beverly Hills and the Los Angeles County Metropolitan Transportation Authority (City Agreement No. 66-16). The following information summarizes the ICM monitoring activities that occurred at the Segment 1 site (La Cienega Station site) during the week of December 25, 2022 – December 31, 2022.

Construction activities during the week included: breaking pavement within the closure on Wilshire Blvd. and removing concrete debris for off-site disposal; installing fencing panels along Wilshire Blvd.; receiving concrete deliveries; pouring concrete and grout within the La Cienega yard; hoisting machinery, materials and debris into and out of the tunnel from the Gale yard and the station access closure on Wilshire Blvd.; receiving materials deliveries; transporting machinery and materials throughout the site; working below deck and within the appendages; cleaning and clearing debris from the site. EI ICMs were present on site during all construction activities. ICMs conducted routine noise measurements at selected noise monitoring locations as well as compliance checks in accordance with the MOAs and associated attachments, exhibits, traffic closure notifications, and traffic management plans. At the conclusion of each work shift, daily monitoring reports were prepared by the respective ICM. Any violations for that date were also prepared by the ICM then reviewed and submitted to the COBH and Metro by EI's Project Manager.

VIOLATION SUMMARY

During the week, EI ICMs identified no violations during construction activities. Daily monitoring reports and photographs of construction activities are provided as Attachment A (*Daily Monitoring Reports*). Daily noise monitoring data are provided in Attachment B (*Noise Monitoring Data Log*).

Christine Chung
Joseph DeMello
January 4, 2023

CONCLUSION

To date, 335 violations have been issued, 30 of which have been rescinded since the beginning of construction on the C1045 Contract for the Purple Line Extension Project – Segment 1. Project construction activities are ongoing and EI ICMs continue to monitor all construction activities applicable to the MOAs on a daily basis.

If you have any questions or comments regarding this letter, please contact me directly at 310.469.8989 or jeremiahgeorge@enviro-intel.com.

Sincerely,

ENVIRONMENTAL INTELLIGENCE, LLC



Jeremiah George
Project Manager

Attachments: Attachment A: Daily Monitoring Reports
Attachment B: Noise Monitoring Data Log

cc: Nell Mardirosian, Los Angeles County Metropolitan Transportation Authority
Candace Lee, Los Angeles County Metropolitan Transportation Authority
William Hamilton, City of Beverly Hills
Kanna Vancheswaran, Psomas
Brett Barnett, Psomas



Attachment A
 Daily Monitoring Reports
 12/25/2022 - 12/31/2022



Summaries (7)

Date Tuesday, December 27, 2022
Monitor Liene Sudduth
Location La Cienega Station
Time 04:45:00 to 17:00:00
Compliant Yes
Summary Contractors/Subcontractors: STS; Century Sweeping; Metro; Psomas
 Representatives: Tarek Hamdi (Metro); German Garcia (Metro); Jason Healy (Psomas);
 Work Location(s): N. Gale Dr. closure; N. Gale yard; La Cienega yard; Below the deck on Wilshire Blvd.; Wilshire Blvd. EB/ WB 1 K-Rail closure; Wilshire Blvd. EB 2 La Cienega Blvd. to Tower Dr.
 The ICM was in possession of applicable COBH-approved closure notifications and TCP for the day's work from 04:45 hours to 17:00 hours on December 27, 2022. EI ICM Liene Sudduth met with Tarek Hamdi (Metro) to discuss the shift's activities. At the beginning of the shift, the ICM calibrated the noise meter at 94.00 dB.
 Work for the shift included: Installation of fencing/panels, Hoisting machinery, debris, materials and equipment in/out of the tunnel in the Gale yard; Transportation of machinery and materials in the North Gale yard, North Gale yard closure, and k-rail closure; Receiving construction materials deliveries, hauling away construction materials from the Gale yard. Setting up and preparing for anticipated concrete/slurry pour in the La Cienega yard; Work below deck and in the appendages; General cleaning and clearing of debris from the appendage, closures, yards, and below the deck on Wilshire Blvd.
 Note: Rain present in the second half of the shift.

Date Tuesday, December 27, 2022
Monitor Ben Rosenkoetter
Location La Cienega Station
Time 20:00:00 to 00:00:00
Compliant Yes
Summary Contractors/Subcontractors: STS
 Representatives: Thomas Wukadinovich (STS)
 Work Location(s): La Cienega Yard; N. Gale yard
 The ICM was in possession of applicable COBH-approved closure notifications and TCP for the day's work from 20:00 hours to 00:00 on December 27th, 2022. At the beginning of the shift, the ICM calibrated the noise meter at 94.00 dB.
 Work for the shift included: Work below deck on Wilshire Blvd.
 Note: Rain was occurring throughout the shift. ICM was off-site monitoring geotechnical instrument maintenance on PLE Section 2 from 21:00 hours to 23:00 hours.





Attachment A
Daily Monitoring Reports
 12/25/2022 - 12/31/2022



Date Wednesday, December 28, 2022
Monitor Liene Sudduth
Location La Cienega Station
Time 05:00:00 to 17:00:00
Compliant Yes
Summary Contractors/Subcontractors: STS; Century Sweeping; Metro; Psomas; Cemex
 Representatives: Tarek Hamdi (Metro); German Garcia (Metro); Jason Healy (Psomas)
 Work Location(s): N. Gale Dr. closure; N. Gale yard; La Cienega yard; Below the deck on Wilshire Blvd.; Wilshire Blvd. EB/ WB 1 K-Rail closure; Wilshire Blvd. EB 2 La Cienega Blvd. to Tower Dr.
 The ICM was in possession of applicable COBH-approved closure notifications and TCP for the day's work from 04:45 hours to 09:45 hours and from 11:00 hours to 17:00 hours December 28, 2022. EI ICM Liene Sudduth met with Tarek Hamdi (Metro) to discuss the shift's activities. At the beginning of the shift, the ICM calibrated the noise meter at 94.00 dB.
 Work for the shift included: Installation of fencing/panels, Hoisting machinery, debris, materials and equipment in/out of the tunnel in the Gale yard; Transportation of machinery and materials in the North Gale yard, North Gale yard closure, and k-rail closure; Receiving construction materials deliveries, hauling away construction materials from the Gale yard; Concrete/slurry pour in the La Cienega yard; Breaking concrete in the appendage closure west of S. Hamilton Dr. and Gale yard; Work below deck and in the appendage; General cleaning and clearing of debris from the appendage, closures, yards, and below the deck on Wilshire Blvd.

Date Wednesday, December 28, 2022
Monitor Ben Rosenkoetter
Location La Cienega Station
Time 18:00:00 to 21:00:00
Compliant Yes
Summary Contractors/Subcontractors: STS
 Representatives: Thomas Wukadinovich (STS)
 Work Location(s): La Cienega Yard; Gale yard; Below deck on Wilshire Blvd.
 The ICM was in possession of applicable COBH-approved closure notifications and TCP for the day's work from 18:00 hours to 21:00 on December 28th, 2022. At the beginning of the shift, the ICM calibrated the noise meter at 94.00 dB.
 Work for the shift included: Work below deck on Wilshire Blvd.; maintenance within the Gale yard.





Attachment A
Daily Monitoring Reports
 12/25/2022 - 12/31/2022



Date Thursday, December 29, 2022
Monitor Liene Sudduth
Location La Cienega Station
Time 05:00:00 to 17:00:00
Compliant Yes
Summary Contractors/Subcontractors: STS; Century Sweeping; Metro; Psomas
 Representatives: Tarek Hamdi (Metro); German Garcia (Metro); Jason Healy (Psomas)
 Work Location(s): N. Gale Dr. closure; N. Gale yard; La Cienega yard; Below the deck on Wilshire Blvd.; Wilshire Blvd. EB/ WB 1 K-Rail closure; Wilshire Blvd. EB 2 La Cienega Blvd. to Tower Dr.
 The ICM was in possession of applicable COBH-approved closure notifications and TCP for the day's work from 05:00 hours to 17:00 hours December 29, 2022. EI ICM Liene Sudduth met with Tarek Hamdi (Metro) to discuss the shift's activities. At the beginning of the shift, the ICM calibrated the noise meter at 94.00 dB.
 Work for the shift included: Hoisting machinery, debris, materials and equipment in/out of the tunnel in the Gale yard; Transportation of machinery and materials in the North Gale yard, North Gale yard closure, and k-rail closure; Receiving construction materials deliveries, hauling away construction equipment from the Gale yard. Work below deck and in the appendage; Breaking concrete and loading it in the haul truck for offsite disposal; General cleaning and clearing of debris from the appendage, closures, yards, and below the deck on Wilshire Blvd.
 Note: Rain misting in the first half of the shift.

Date Thursday, December 29, 2022
Monitor Ben Rosenkoetter
Location La Cienega Station
Time 20:00:00 to 04:30:00
Compliant Yes
Summary Contractors/Subcontractors: STS; Badger Daylighting
 Representatives: Thomas Wukadinovich (STS); Anthony Guzman (Psomas)
 Work Location(s): La Cienega Yard; Gale yard; Below deck on Wilshire Blvd.; Wilshire Blvd. between Hamilton Dr. and La Cienega Blvd.
 The ICM was in possession of applicable COBH-approved closure notifications and TCP for the day's work from 20:00 hours on December 29th to 04:30 hours on December 30th, 2022. EI ICM Ben Rosenkoetter met with Anthony Guzman (Psomas) to discuss the shifts activities. At the beginning of the shift, the ICM calibrated the noise meter at 94.00 dB.
 Work for the shift included: Implementing the station access lane closure on Wilshire Blvd. at Hamilton Dr.; lifting decking panels and installing safety equipment; using a vacuum truck for subsurface investigation work on Wilshire Blvd. adjacent to the La Cienega yard; emptying vacuum truck within the Gale yard spoils pile; replacing decking panels and cleaning the site.
 Note: ICM was monitoring activities at PLE Section 2 from 21:00 hours to 22:00 hours.





Attachment A
Daily Monitoring Reports
12/25/2022 - 12/31/2022



Date	Friday, December 30, 2022
Monitor	Liene Sudduth
Location	La Cienega Station
Time	05:00:00 to 14:30:00
Compliant	Yes
Summary	<p>Contractors/Subcontractors: STS; Century Sweeping; Metro; Psomas; Cemex</p> <p>Representatives: Tarek Hamdi (Metro); German Garcia (Metro); Jason Healy (Psomas)</p> <p>Work Location(s): N. Gale Dr. closure; N. Gale yard; La Cienega yard; Below the deck on Wilshire Blvd.; Wilshire Blvd. EB/ WB 1 K-Rail closure; Wilshire Blvd. EB 2 La Cienega Blvd. to Tower Dr.</p> <p>The ICM was in possession of applicable COBH-approved closure notifications and TCP for the day's work from 05:00 hours to 14:30 hours on December 30, 2022. EI ICM Liene Sudduth met with Tarek Hamdi (Metro) to discuss the shift's activities. At the beginning of the shift, the ICM calibrated the noise meter at 94.00 dB.</p> <p>Work for the shift included: Hoisting machinery, debris, materials and equipment in/out of the tunnel in the Gale yard; Transportation of machinery and materials in the North Gale yard, North Gale yard closure, and k-rail closure; Receiving construction materials deliveries, Breaking concrete in the appendage closure west of S. Hamilton Dr. and Gale yard; Loading broken concrete into the haul truck for offsite disposal in the Gale yard and appendage west of S. Hamilton Dr.; Work below deck and in the appendage; General cleaning and clearing of debris from the appendage, closures, yards, and below the deck on Wilshire Blvd.</p> <p>Note: Rain misting throughout the shift.</p>





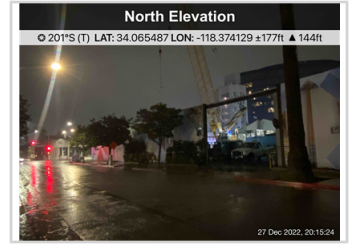
Photos



Photos (22)

UID: 9042 **Latitude:** 34.065487
Date: Dec 27, 2022 **Longitude:** -118.374129
Type: General **Elevation:** ---

Notes
 Photo shows the Gale yard access on Gale Dr.



UID: 9043 **Latitude:** 34.065109
Date: Dec 27, 2022 **Longitude:** -118.376024
Type: General **Elevation:** ---

Notes
 Photo shows the K-rail closure on the southern shoulder of Wilshire Blvd. La Cienega yard can be seen in the background.



UID: 9026 **Latitude:** 34.06503
Date: Dec 27, 2022 **Longitude:** -118.37402
Type: General **Elevation:** ---

Notes
 Photo shows STS crew transporting construction materials from the Gale yard.



UID: 9024 **Latitude:** 34.06462
Date: Dec 27, 2022 **Longitude:** -118.37415
Type: General **Elevation:** ---

Notes
 Photo shows STS crew receiving construction material deliveries in the N. gale closure.



UID: 9025 **Latitude:** 34.06485
Date: Dec 27, 2022 **Longitude:** -118.3741
Type: General **Elevation:** ---

Notes
 Photo shows STS crew unloading and staging construction materials in the Gale closure.





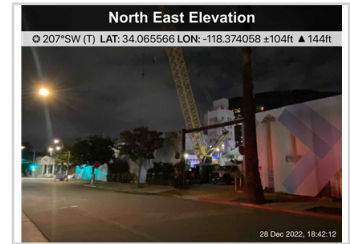
Photos



UID: 9045 **Latitude:** 34.065566
Date: Dec 28, 2022 **Longitude:** -118.374058
Type: General **Elevation:** ---

Notes

Photo shows the Gale yard entrance on Gale Dr. Maintenance vehicle was active within the yard.



UID: 9044 **Latitude:** 34.065057
Date: Dec 28, 2022 **Longitude:** -118.376197
Type: General **Elevation:** ---

Notes

Photo shows the southern appendage closure on Wilshire Blvd.



UID: 9029 **Latitude:** 34.06479
Date: Dec 28, 2022 **Longitude:** -118.37408
Type: General **Elevation:** ---

Notes

Photo shows STS crew using forklift to transport construction materials from the Gale yard to appendage closure.



UID: 9030 **Latitude:** 34.06482
Date: Dec 28, 2022 **Longitude:** -118.3742
Type: General **Elevation:** ---

Notes

Photo shows STS crew receiving and staging concrete/slurry deliveries in the Gale closure for the concrete/slurry pour in the La Cienega yard.



UID: 9032 **Latitude:** 34.06464
Date: Dec 28, 2022 **Longitude:** -118.37454
Type: General **Elevation:** ---

Notes

Photo shows STS crew using crane to hoist construction materials in the Gale yard.



UID: 9031 **Latitude:** 34.0647
Date: Dec 28, 2022 **Longitude:** -118.37436
Type: General **Elevation:** ---

Notes

Photo shows STS crew receiving construction material delivery in the Gale closure.





Photos



UID: 9034 **Latitude:** 34.06508
Date: Dec 29, 2022 **Longitude:** -118.37597
Type: General **Elevation:** ---

Notes
 Photo shows STS crew using backhoe with jackhammer attachment to break concrete in the appendage on Wilshire Blvd. west of S. Hamilton Dr.



UID: 9036 **Latitude:** 34.06507
Date: Dec 29, 2022 **Longitude:** -118.37377
Type: General **Elevation:** ---

Notes
 Photo shows STS crew receiving construction material deliveries in the Gale yard.



UID: 9033 **Latitude:** 34.06493
Date: Dec 29, 2022 **Longitude:** -118.37408
Type: General **Elevation:** ---

Notes
 Photo shows STS crew uploading construction equipment onto flat bed truck for haul-away.



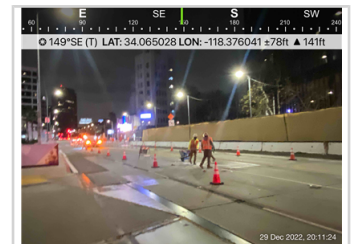
UID: 9035 **Latitude:** 34.06474
Date: Dec 29, 2022 **Longitude:** -118.37465
Type: General **Elevation:** ---

Notes
 Photo shows STS crew using crane to hoist construction materials in the Gale yard.



UID: 9046 **Latitude:** 34.065006
Date: Dec 29, 2022 **Longitude:** -118.376016
Type: Construction Activity **Elevation:** ---

Notes
 Photo shows STS crew implementing the lane closure on Wilshire Blvd.



UID: 9047 **Latitude:** 34.06475
Date: Dec 29, 2022 **Longitude:** -118.375674
Type: Construction Activity **Elevation:** ---

Notes
 Photo shows STS/Badger Daylighting using a vacuum truck to excavate below the Wilshire Blvd. decking.





Photos



UID: 9048 **Latitude:** 34.064737
Date: Dec 30, 2022 **Longitude:** -118.375682
Type: General **Elevation:** ---

Notes

Photo shows STS crew closing the deck panel access and removing safety equipment from Wilshire Blvd.



UID: 9040 **Latitude:** 34.06489
Date: Dec 30, 2022 **Longitude:** -118.37546
Type: General **Elevation:** ---

Notes

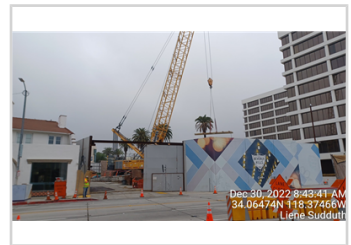
Photo shows STS crew using backhoe with breaker attachment to break concrete in the appendage west of S. Hamilton Dr.



UID: 9038 **Latitude:** 34.06474
Date: Dec 30, 2022 **Longitude:** -118.37466
Type: General **Elevation:** ---

Notes

Photo shows STS crew hoisting construction materials in the Gale yard.



UID: 9037 **Latitude:** 34.06529
Date: Dec 30, 2022 **Longitude:** -118.37423
Type: General **Elevation:** ---

Notes

Photo shows STS crew loading broken concrete into haul truck for offsite disposal in the Gale yard.



UID: 9039 **Latitude:** 34.06527
Date: Dec 30, 2022 **Longitude:** -118.37421
Type: General **Elevation:** ---

Notes

Photo shows STS crew hoisting construction materials in the Gale yard.





Attachment B – Construction Noise Monitoring Results

Receptor ID	Time of Measurement	Measured Noise Level Leq (15-Minute)	Applicable Noise Threshold	Exceeded Threshold?	Notes
December 27, 2022					
SLC-7	8:26	61.3	71.7	No	STS crew receiving construction material deliveries in the Gale closure and crew using crane to hoist construction materials in the Gale yard.
SLC-7	9:51	63.1	71.8	No	STS crew using forklift to unload delivered materials in the Gale closure.
SLC-4/L-9	12:20	59.5	65.9	No	STS crew working in the appendage, installing sound panels, fencing, crew using crane to hoist construction materials in the Gale yard.
December 28, 2022					
SLC-1	5:41	54.5	62.1	No	STS crew receiving concrete/slurry for concrete/slurry pour in the La Cienega yard.
SLC-7	6:28	57.9	64	No	STS crew receiving concrete/slurry trucks and staging them in the Gale closure, crew using crane to hoist construction materials in the Gale yard.
SLC-4/L-9	7:41	59.7	65.2	No	STS crew working in appendage, moving and transporting materials from Gale yard to appendage, and crane hoisting materials in the Gale yard.
SLC-3	8:44	57.9	63.6	No	Crews working in the appendage west of S. Hamilton Dr. and crew pouring concrete/slurry in the La Cienega Dr.
SLC-7	12:21	61.6	71.9	No	Crews working in the Gale yard, using forklift to move materials in the yard and crane hoisting construction materials in the Gale yard.
SLC-7	13:41	66.7	72.9	No	STS crew using backhoe with breaker attachment to break up concrete blocks in the Gale yard.
SLC-7	14:20	61.5	72.1	No	STS crew using backhoe with breaker attachment to break up concrete blocks in the Gale yard.
December 29, 2022					
SLC-7	9:54	63.3	71.8	No	STS crew is using crane to hoist construction materials in the Gale yard.



Receptor ID	Time of Measurement	Measured Noise Level Leq (15-Minute)	Applicable Noise Threshold	Exceeded Threshold?	Notes
SLC-7	13:00	60.7	72.9	No	STS crew working in the Gale yard and hoisting construction materials in the Gale yard.
SLC-1	21:57	57.9	64.6	No	STS utilizing a vacuum truck for subsurface investigation on Wilshire Blvd. west of Hamilton Dr.
SLC-1	23:59	58.7	62	No	STS utilizing vacuum truck for subsurface investigation below Wilshire Blvd.
December 30, 2022					
SLC-7	7:07	57.5	69	No	STS crew using backhoe with breaker attachment to break up concrete blocks in the Gale yard.