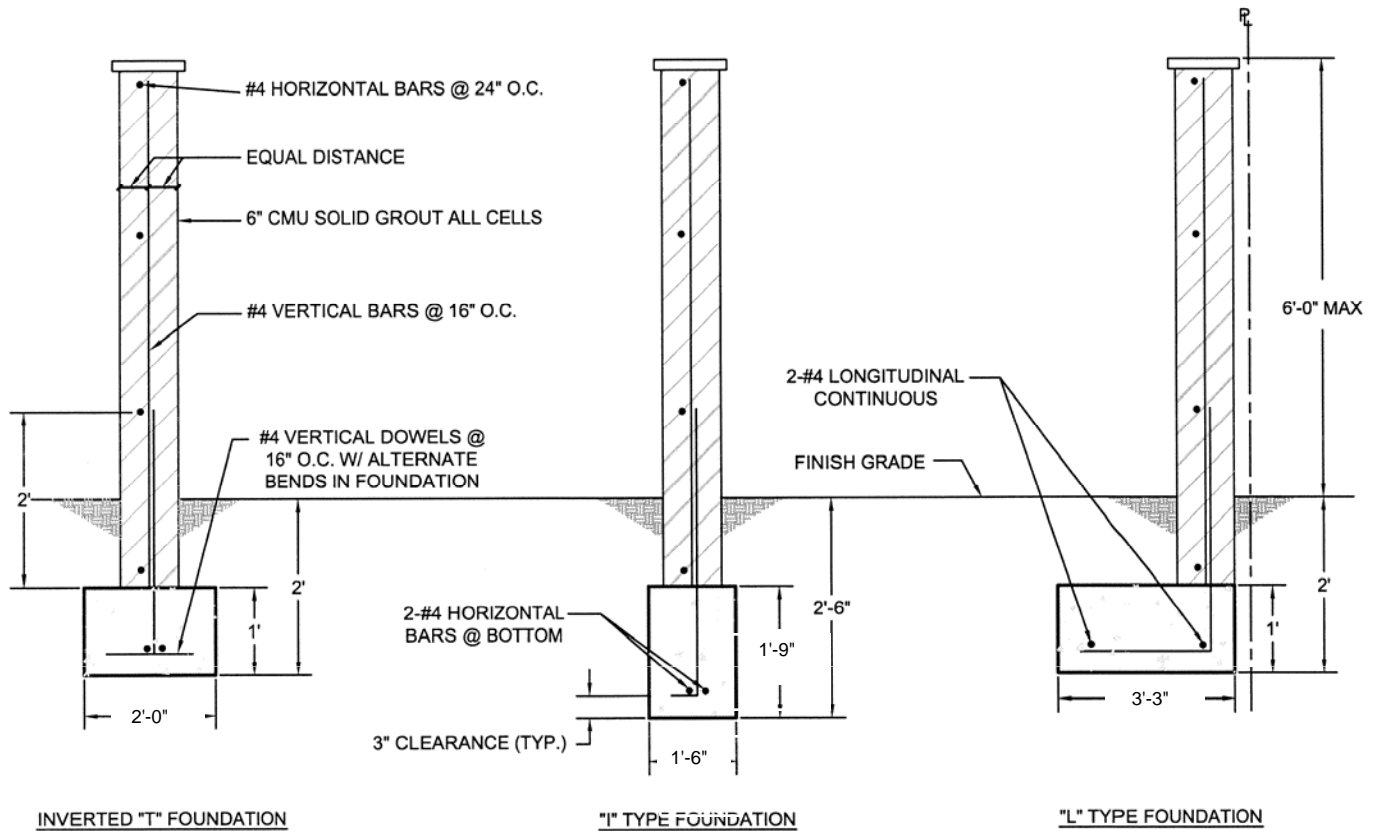




6" CONCRETE MASONRY BLOCK FENCE WALL DETAIL 6'-0" IN HEIGHT MAXIMUM



GENERAL SPECIFICATIONS & NOTES

1. Concrete mix for footing to be 1 part cement to 2-1/2 parts sand to 3-1/2 parts gravel with a maximum of 7-1/2 gallons of water per sack of cement. $f'c = 2500$ psi. Cement shall conform to ASTM C-150.
2. Concrete block units shall conform to ASTM C90, Grade N.
3. Reinforcing steel to be deformed and conform to A.S.T.M. specs. A 615 Grade 40 or Grade 60.
4. Rebar shall be centered in the concrete block.
5. Concrete block units are to be staggered and have vertical continuity of cells unobstructed.
6. Mortar mix for concrete to be 1 part cement to 1/4 part lime to 3 parts damp loose sand.
7. Grout mix for concrete block wall to be 1 part cement to 3 parts sand to which may be added not more than 1/10 part lime. Sufficient water is to be added to produce consistency for pouring without segregation of the constituents. The grout may contain 2 parts pea gravel, maximum size of 3/8".
8. First inspection to be after trenches are ready for concrete and all required steel is tied in place but before foundation concrete is poured. Second inspection to be, when first horizontal bar is in place with vertical and horizontal steel but not grouted.
9. Foundation must be poured against undisturbed soil with level ground on both sides of wall on all types of foundations (not retaining earth).
10. Masonry or concrete fences over 3'-6" in height shall require building permit (ORD #169.344).
11. Height of fence shall comply with all provisions of the zoning code.
12. Single Family Residential properties with walls built on property line must use "L" Type Foundation. Any Alley repair patch must comply with City of Beverly Hills Department of Public Works & Transportation, Civil Engineering Division Standard Drawing BH 114.

Note *Drawing is not to scale. Contractor to follow dimensions specified